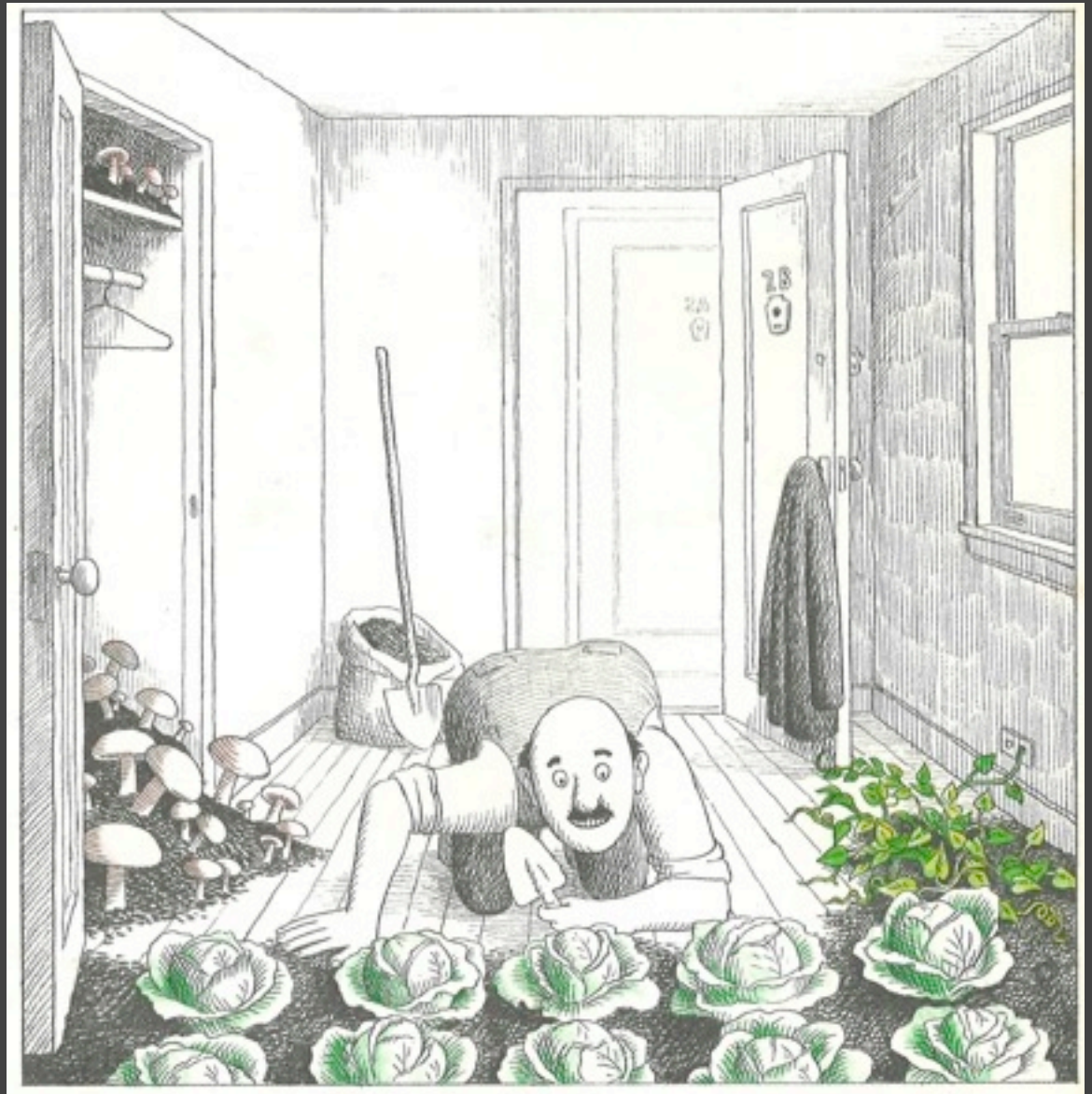
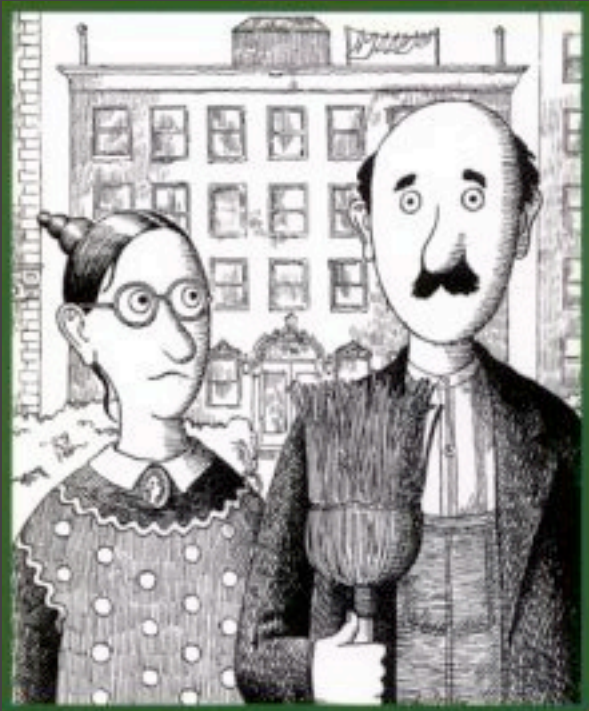


# urban food systems

erin christensen, mithun  
stephen antupit, mithun





old mcdonald had an apartment house

Judi Barrett, 1969





Some days later, Mrs. Katz's downstairs neighbor, Mr. Hopkins, turned on a faucet and got hot and cold running sweet potato vines. Above his head he could see carrots popping through the ceiling. He became furious. "Either that garden up there goes or I go," he screamed at Old MacDonald.

But, Old MacDonald really didn't care. He had begun to feel that in some ways vegetables made better tenants than people. Carrots didn't smudge brass doorknobs. Cucumbers didn't leave muddy footprints in the halls. And potatoes didn't bang on the radiators for more steam.

Angry Mr. Hopkins moved out.

old mcdonald had an apartment house

Judi Barrett, 1969

MITHŪN

Thursday, December 10, 2009





old mcdonald had an apartment house

Judi Barrett, 1969

MITHUN

Thursday, December 10, 2009

where are we  
now?





# production

## where does our food come from?

2% of farms produce 50% of all agricultural products in the U.S.

MITHÜN

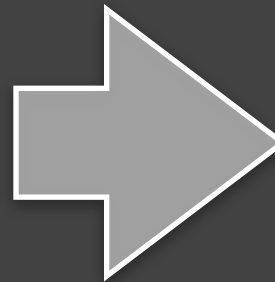
Thursday, December 10, 2009

# production

today



1940



how is it produced?

our food system uses **more fossil fuels** than any industry except cars

MITHÜN





production

what are the implications?  
40% of global croplands are experiencing **soil erosion** and reduced fertility

MITHÜN

Thursday, December 10, 2009





# distribution

## how do we get our food?

the average distance food travels from farm to plate in the U.S. is about **1,500 miles**

MITHŪN

Thursday, December 10, 2009



# distribution

## how do we get our food?

since 1960, the tonnage of food shipped between nations has grown **four fold**

MITHŪN

Thursday, December 10, 2009



# consumption



who's feeding it to us?

**one in three** americans born after 2000 is expected to develop **diabetes** MITHŪN

Thursday, December 10, 2009

# consumption



who's feeding it to us?  
distance to the nearest mcdonald's

(graphic: Stephen Von Worley @  
weathersealed.com)

MITHÜN

Thursday, December 10, 2009



consumption

what are we eating?  
the Revis family's weekly consumption

(photo: © Peter Menzel)

MITHŪN

Thursday, December 10, 2009

Thursday, December 10, 2009





waste

where does it all go?

americans generate roughly **30 million tons** of food waste every year

MITHÜN

Thursday, December 10, 2009



# role of food in our lives



community + cultural health  
food has traditionally been an integral part of community

MITHŪN



Potassium (mg)  
Vitamin B<sub>12</sub> (μg)  
Vitamin C (mg)  
Vitamin A (μg RE)  
Vitamin D  
Vitamin E  
Vitamin K (μg)

physical health

68% of adult americans are overweight or obese

MITHŪN

Thursday, December 10, 2009





mental health

biophilic benefits of farming and access to nature

MITHŪN

Thursday, December 10, 2009





# environmental health

83% of the food **GHG footprint** in the U.S. comes from production

MITHÜN

Thursday, December 10, 2009

questions we are asking





how can we reconnect with our food?





how do we best support access to healthy food?





how do food and resource systems make places?

MITHUN



how do we support what our policies proclaim?

MITHÜN

Thursday, December 10, 2009





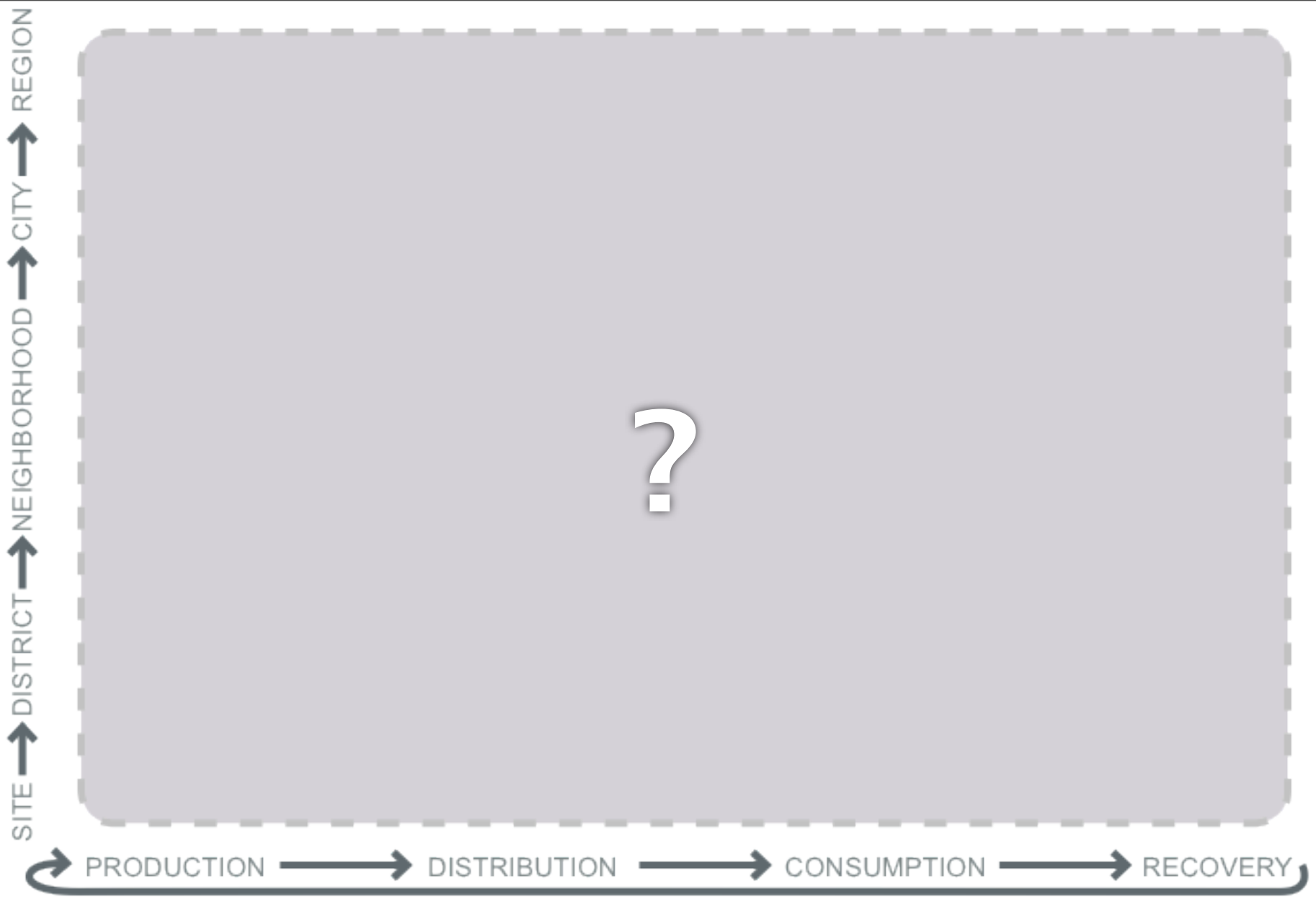
how do our choices shape our food system?

a few examples...





# food system matrix



fitting into the food system



SITE → DISTRICT → NEIGHBORHOOD → CITY → REGION



center for urban agriculture  
vertical farm design concept for the living building challenge

MITHŪN



© Copyright Mithun Inc. All Rights Reserved

# center for urban agriculture

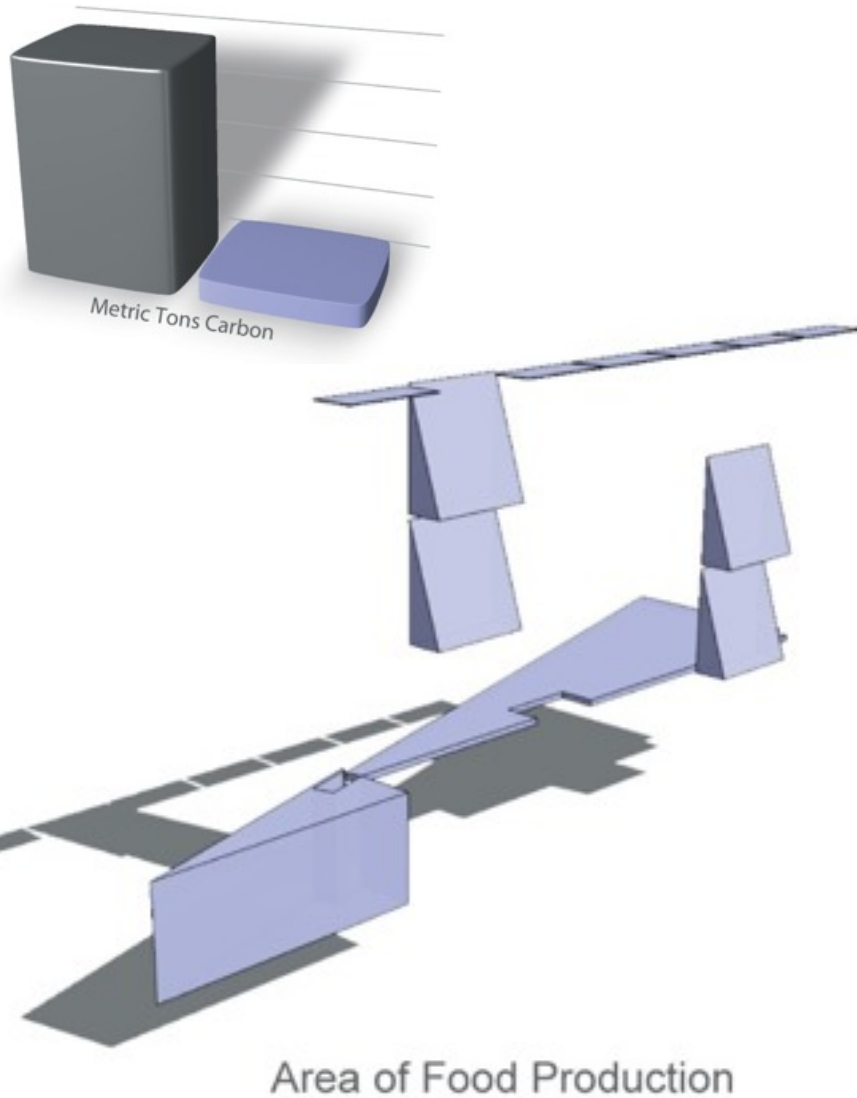
## vertical farm design concept for the living building challenge

MITHUN

Thursday, December 10, 2009



- Embodied C from Baseline Food Production
- Embodied C from Local Sources (<150 miles)



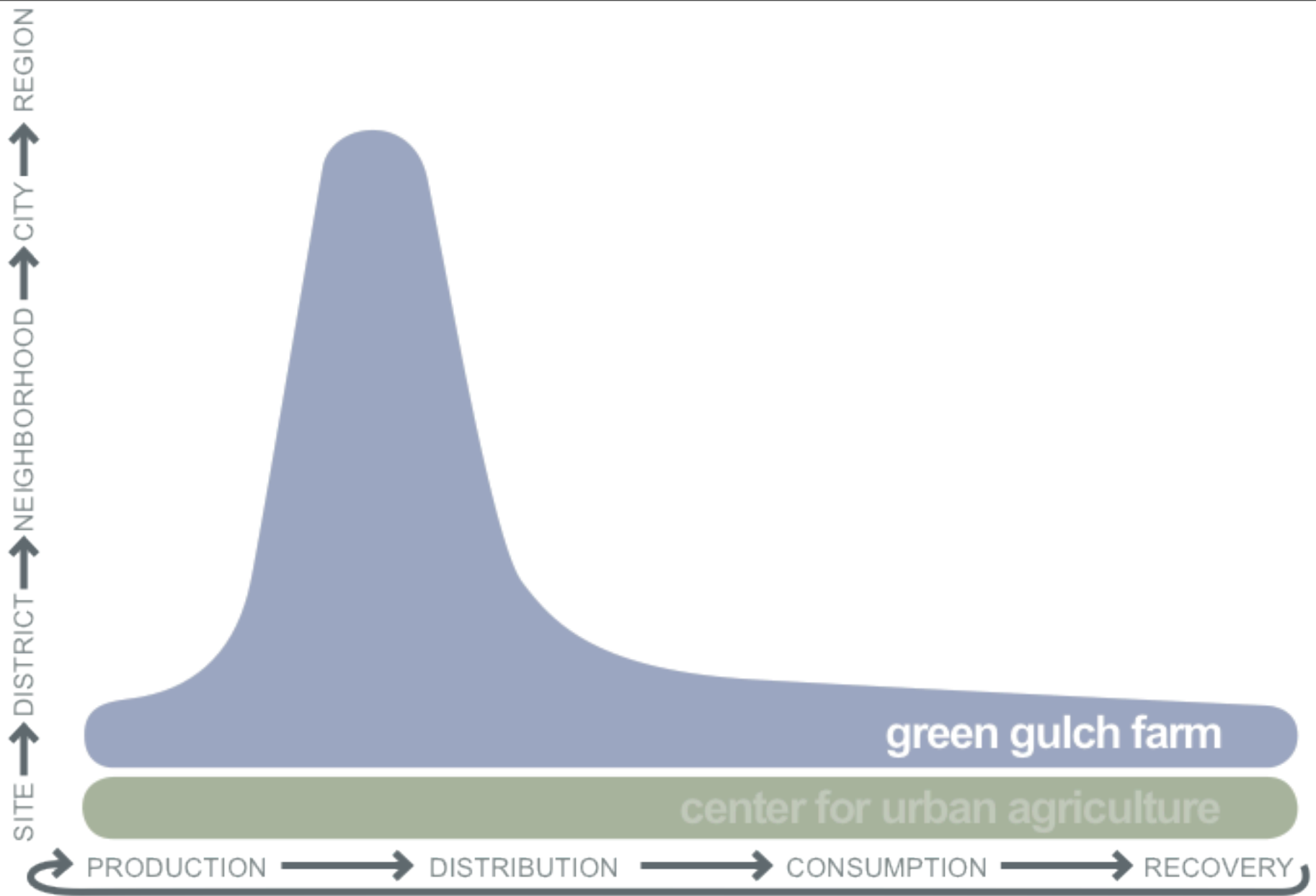
© Copyright Mithun Inc. All Rights

# center for urban agriculture

## vertical farm design concept for the living building challenge

MITHUN

Thursday, December 10, 2009



# green gulch farm 500 year masterplan

long-term strategy for local/regional production + ecological resilience

MITHŪN





# green gulch farm 500 year masterplan

long-term strategy for local/regional production + ecological resilience

MITHŪN

Thursday, December 10, 2009



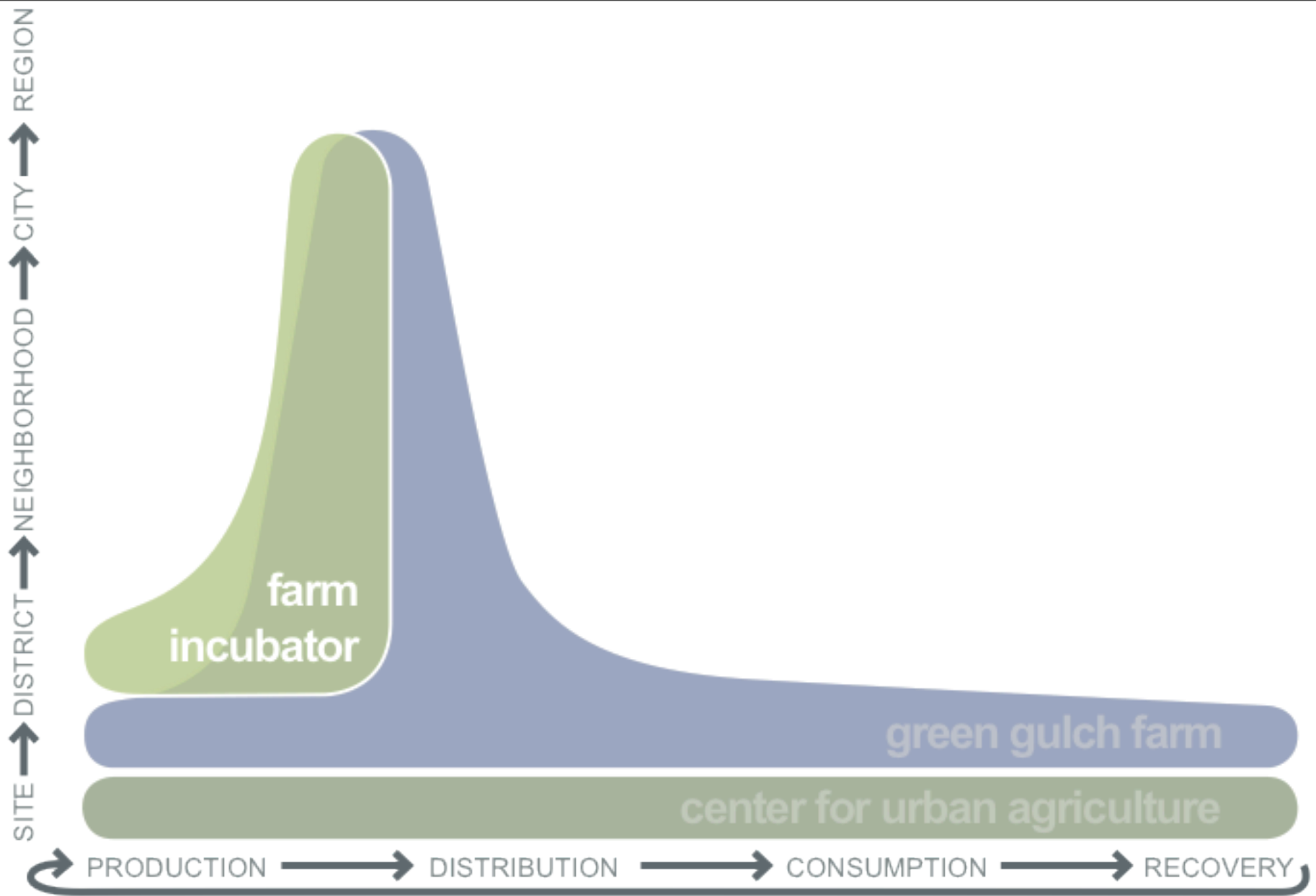


green gulch farm 500 year masterplan  
long-term strategy for local/regional production + ecological resilience

MITHÜN

Thursday, December 10, 2009





**farm incubator**  
empowering + connecting new farmers

MITHŪN

Thursday, December 10, 2009



farm incubator  
empowering + connecting new farmers

MITHŪN

Thursday, December 10, 2009



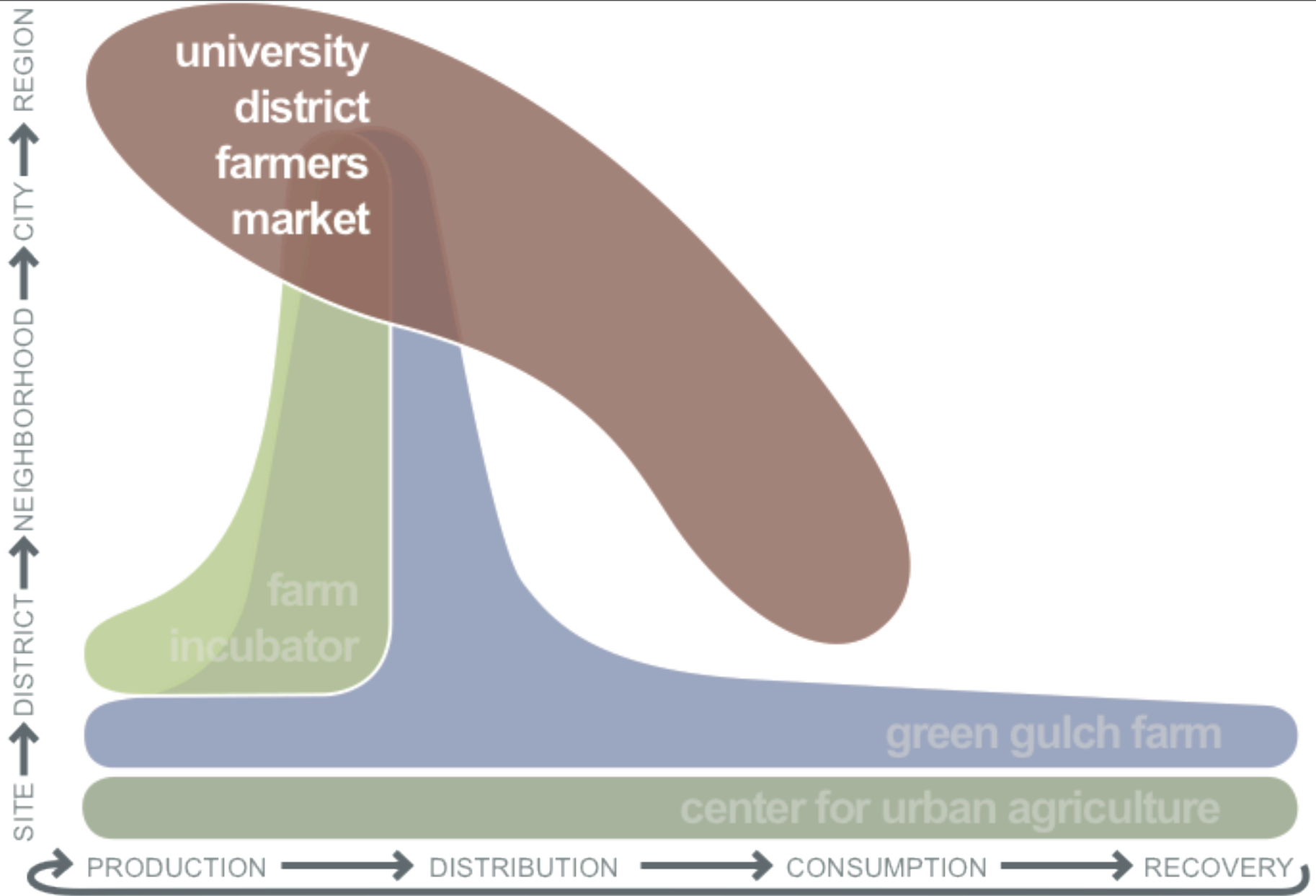


**GROWFOOD**  
WORK. LIVE. LEARN.

**farm incubator**  
empowering + connecting new farmers

MITHŪN

Thursday, December 10, 2009



university district farmer's market  
direct distribution – connecting farmers with consumers

MITHŪN





# university district farmer's market

direct distribution – connecting farmers with consumers

MITHÜN

Thursday, December 10, 2009





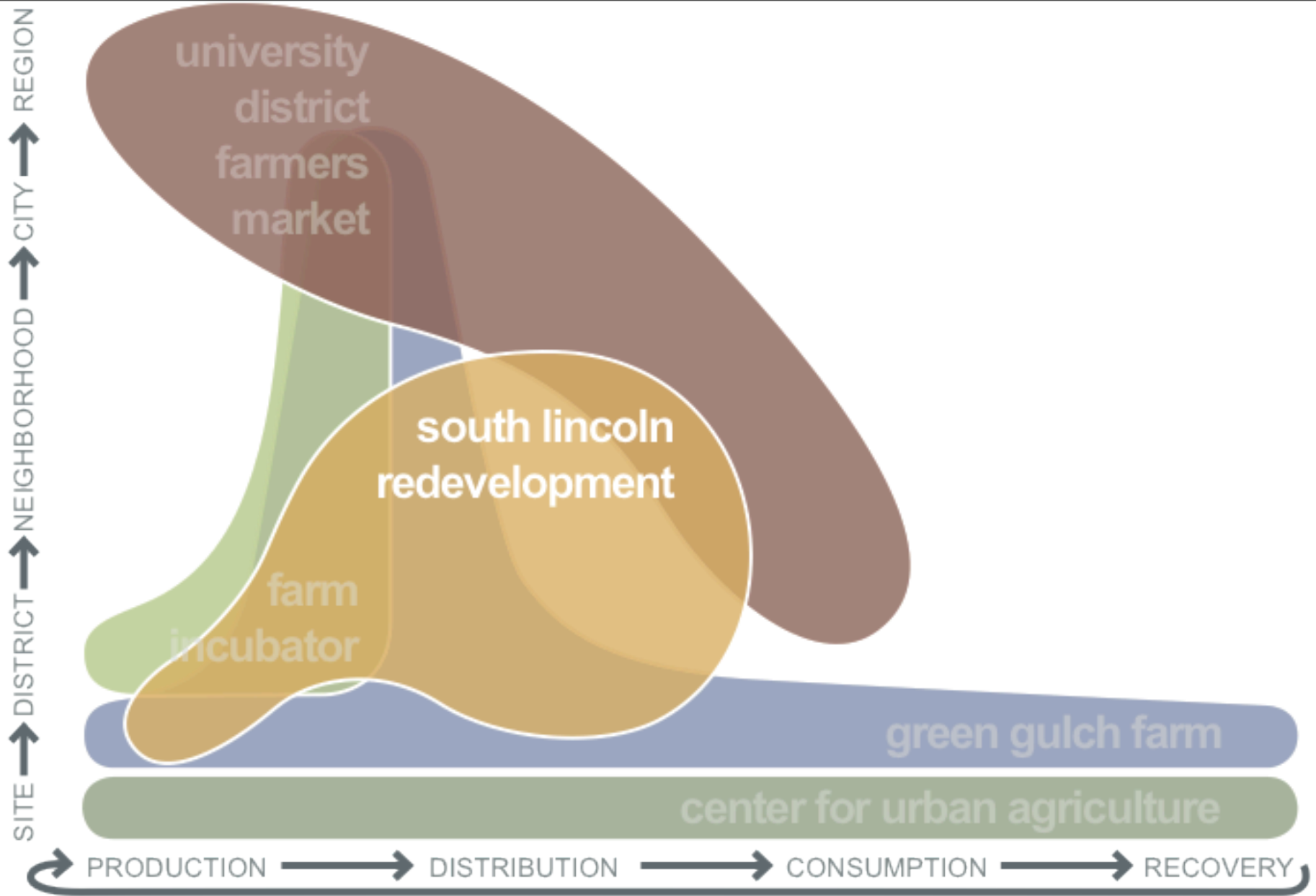
# university district farmer's market

direct distribution – connecting farmers with consumers

MITHÜN

Thursday, December 10, 2009





# south lincoln redevelopment master plan

## urban food access



# south lincoln redevelopment master plan

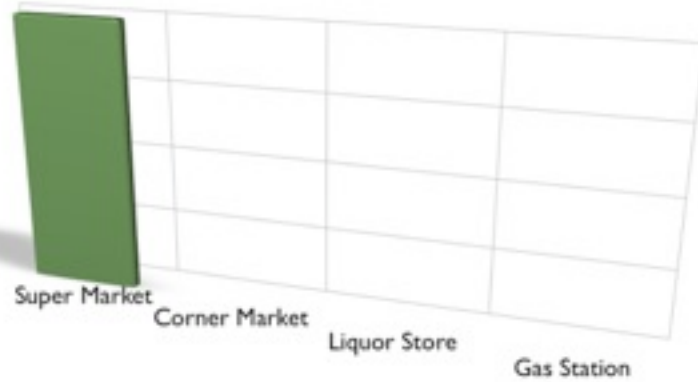
## urban food access

MITHÜN

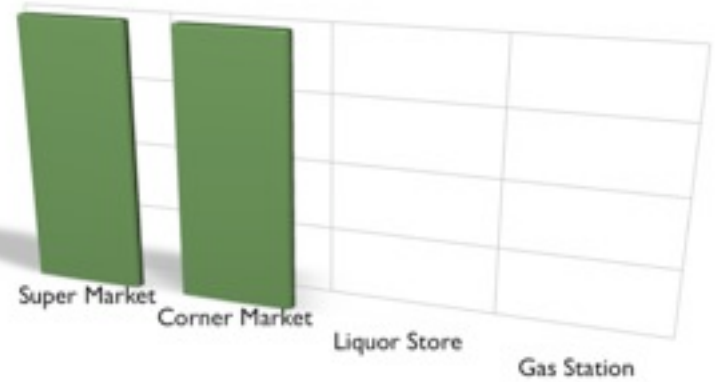
Thursday, December 10, 2009



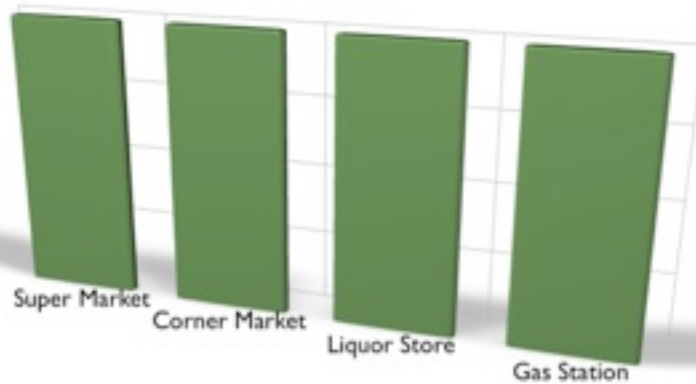
■ Fresh Fruits



■ Fresh Vegetables

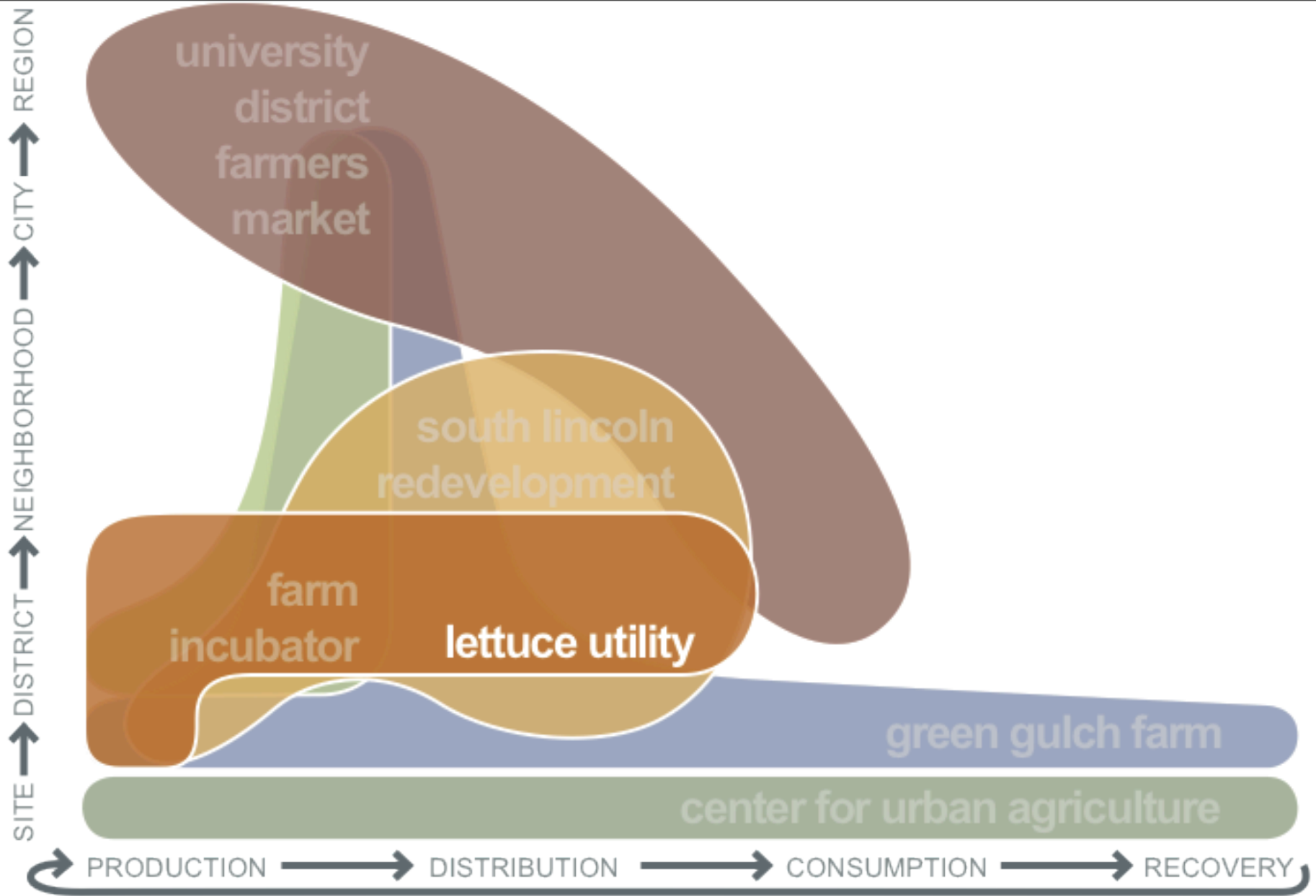


■ Unhealthy Products



# south lincoln redevelopment master plan

## urban food access



# lettuce utility

## business plan + organizational framework



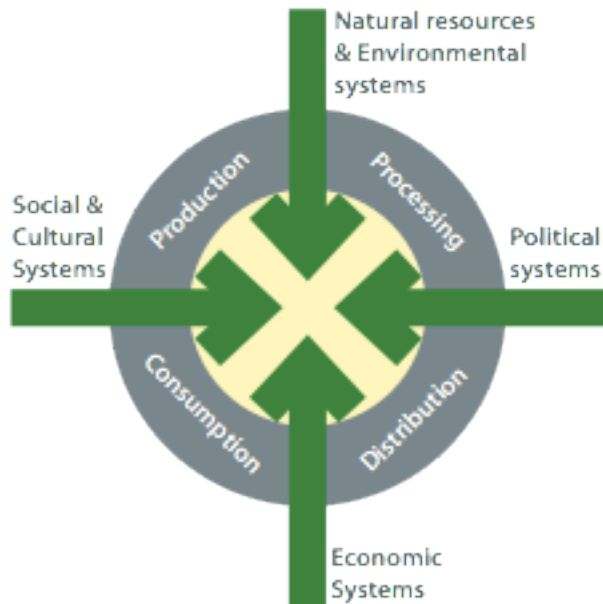


# lettuce utility

## business plan + organizational framework

Thursday, December 10, 2009

## Food System Model



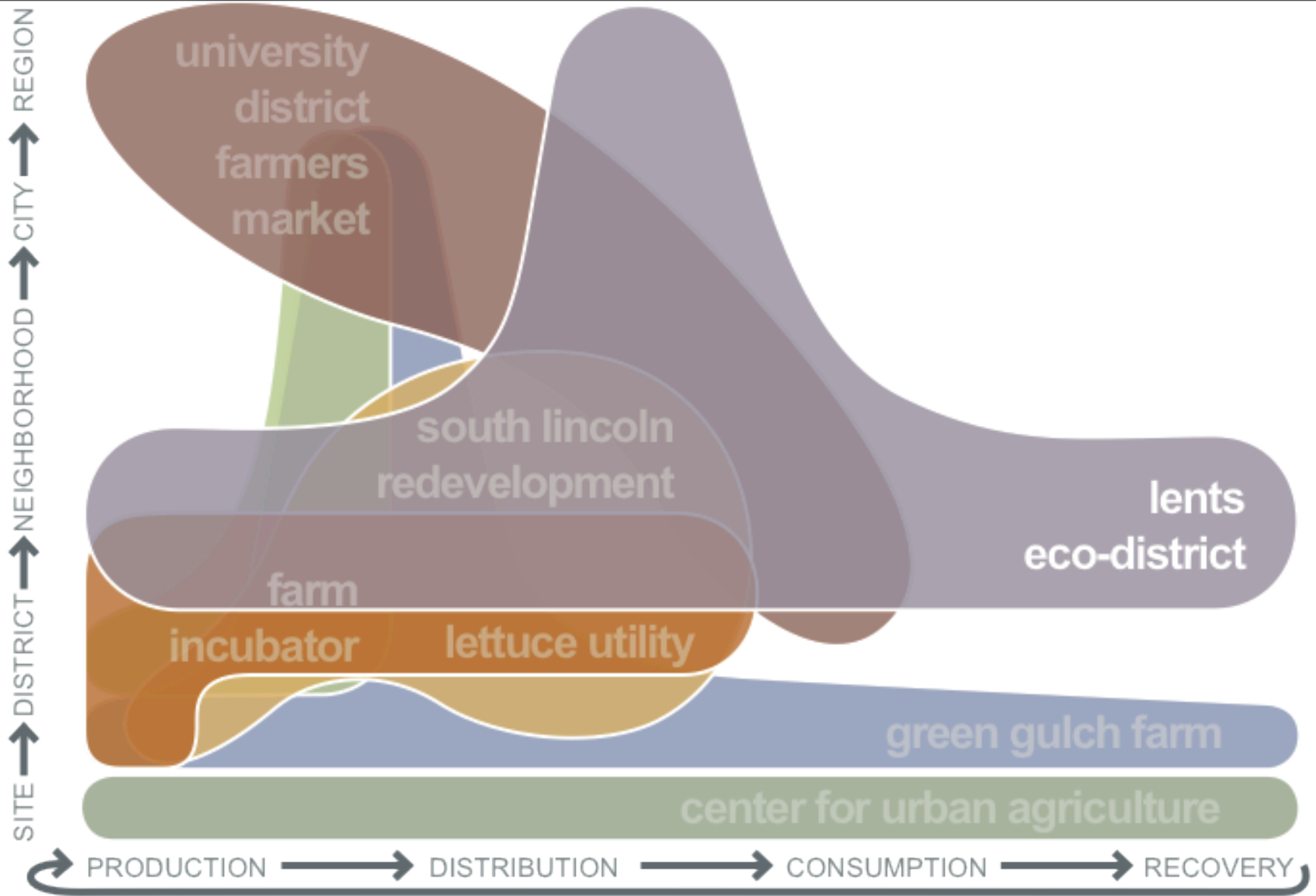
Adapted from the San Francisco Food Alliance 2005 San Francisco Collaborative Food System Assessment

## District Food System Outcomes



**lettuce utility**  
business plan + organizational framework





# lents eco-district and industrial corridor vision plan

## district level strategies

MITHŪN



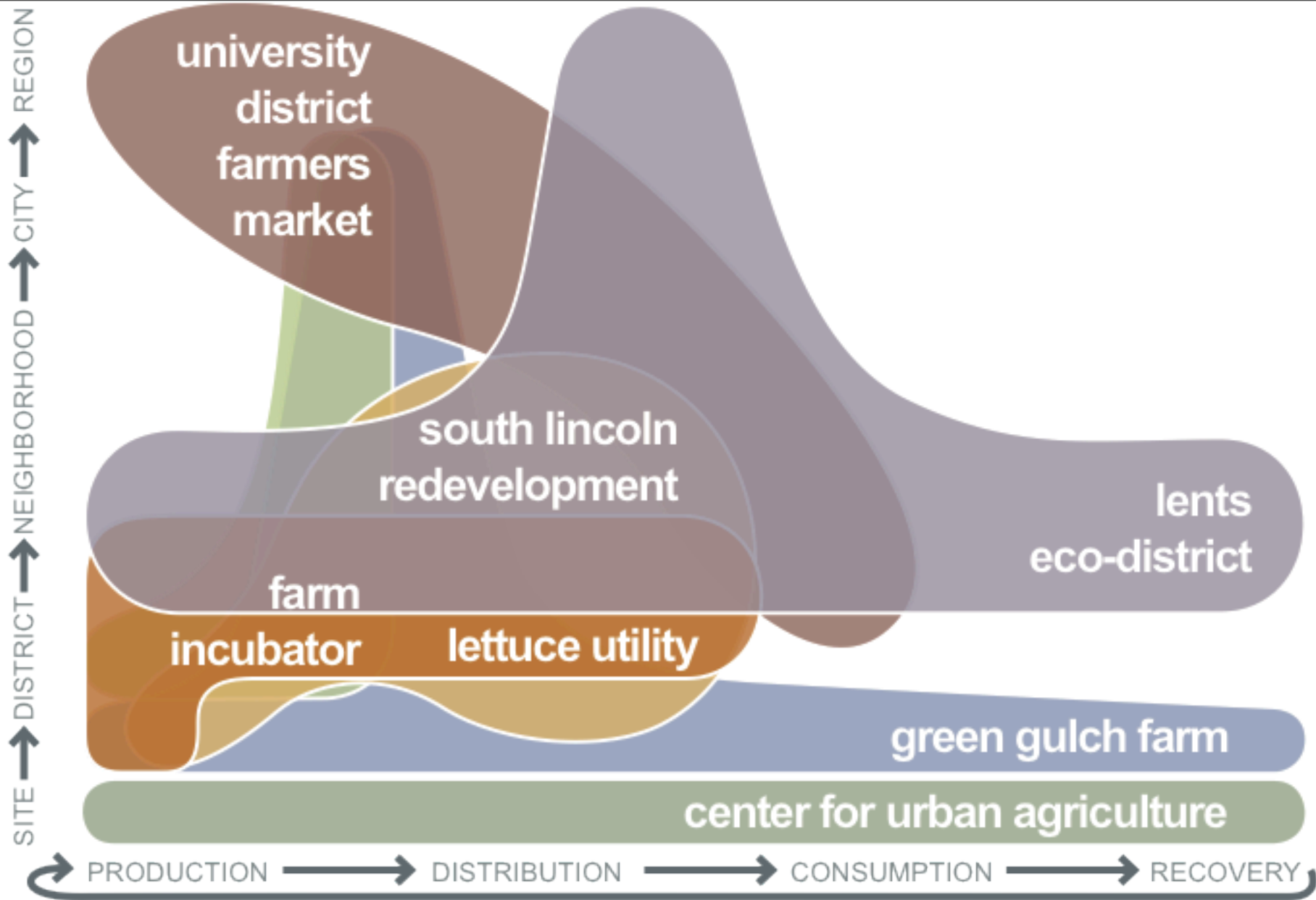
# lents eco-district and industrial corridor vision plan

## district level strategies

MITHUN

Thursday, December 10, 2009





erin christensen, mithun  
stephen antupit, mithun



thanks.

MITHŪN

Thursday, December 10, 2009