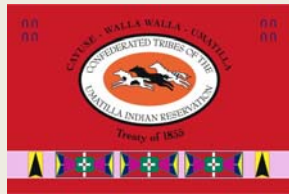


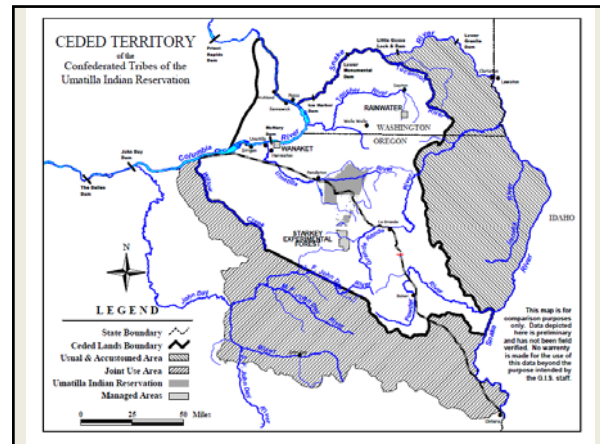
## Cascadia Collaborative

Bridging to the Future  
October 19-21, 2011

### SUSTAINABLE TRIBAL PLANNING



Confederated Tribes of the Umatilla Indian Reservation  
Jim Beard, AICP-Comprehensive Planning Manager  
Patty Perry, Senior Planner

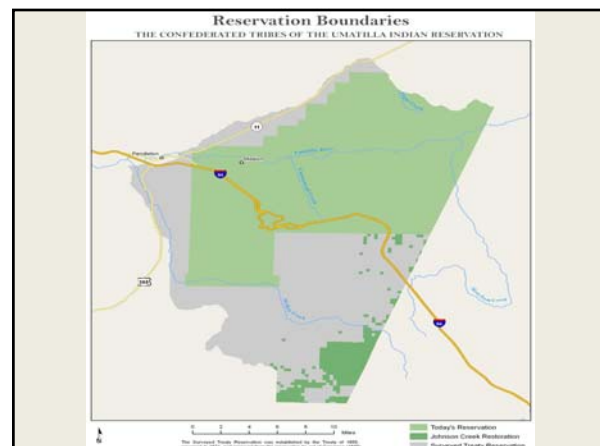


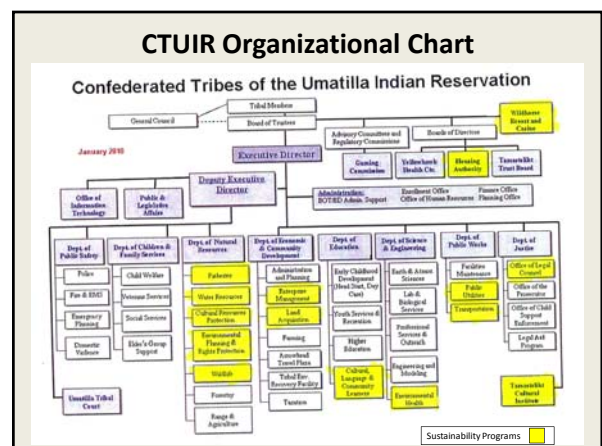
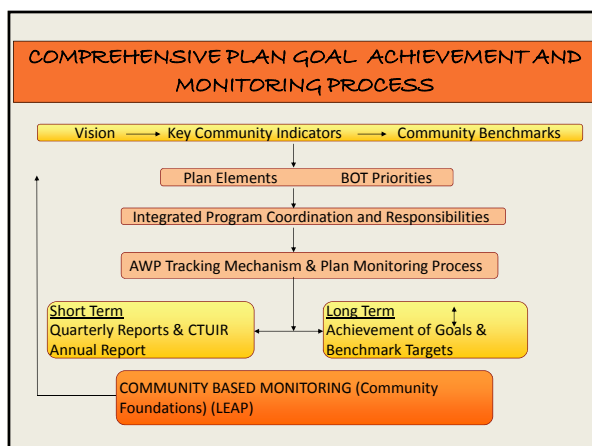
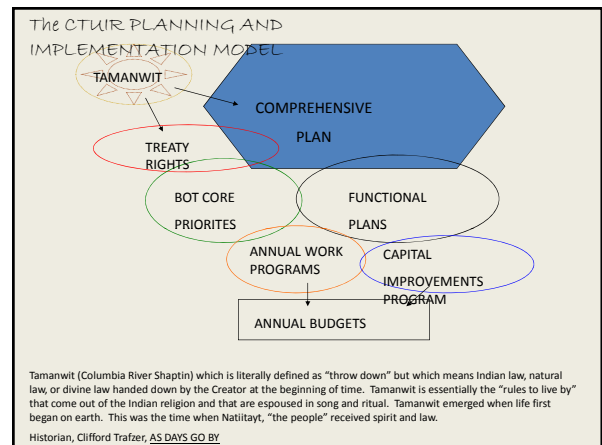
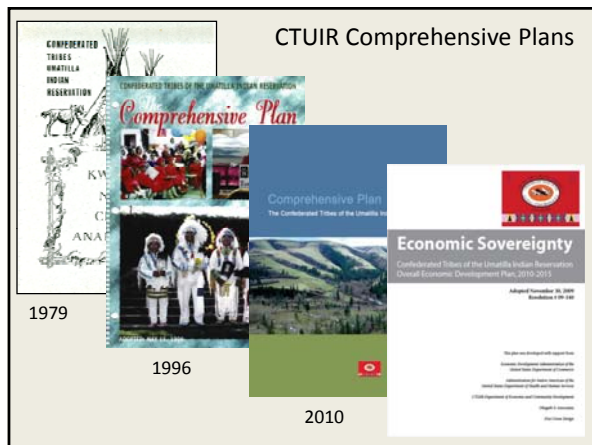
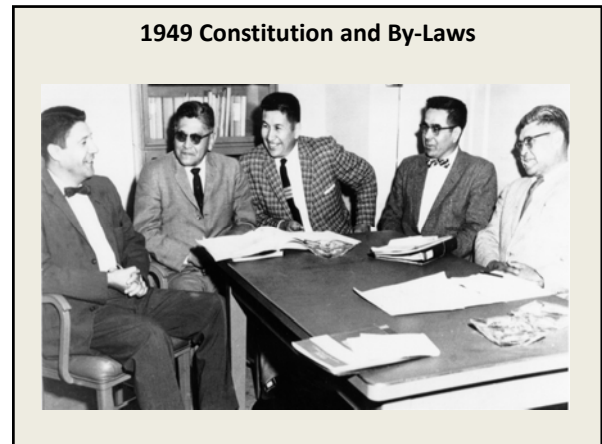
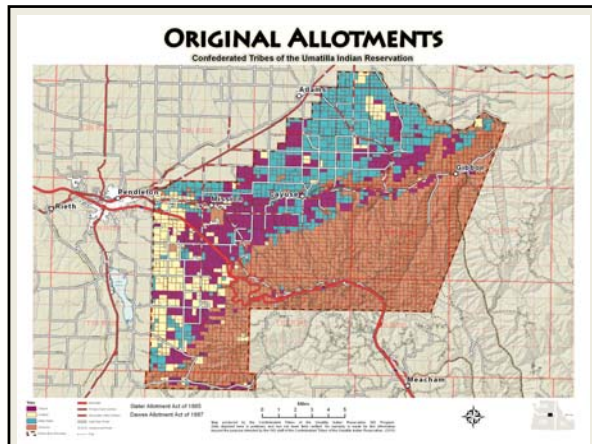
### Market Sustainability Area

FIGURE 2 - CTUIR POSSESSORY & USAGE AREA



### 1855 Sustainability Conference

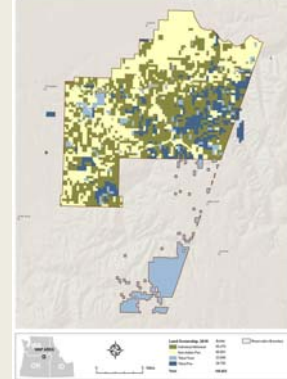




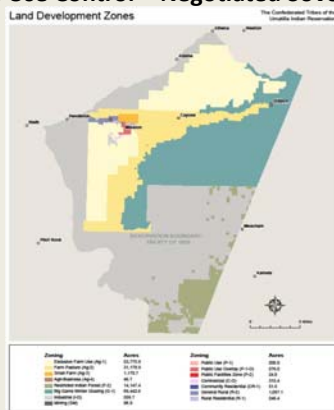
### Sustaining Tribal Culture



### Land Acquisition Map



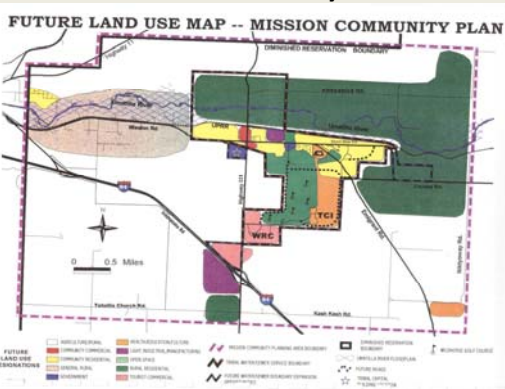
### Land Use Control – Negotiated Sovereignty



### Non-Sustainable Zoning



### Mission Community Plan



### 1988 Capital Improvements Projects

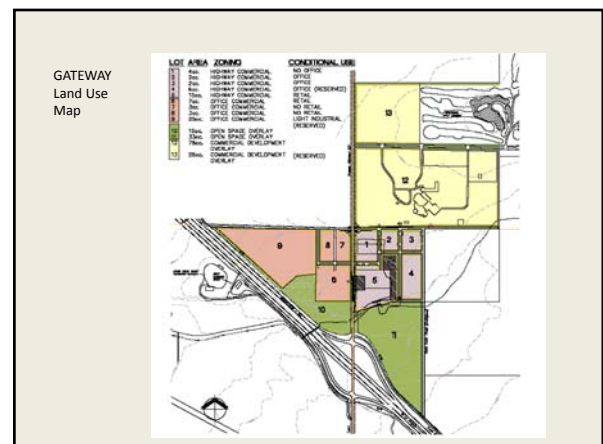
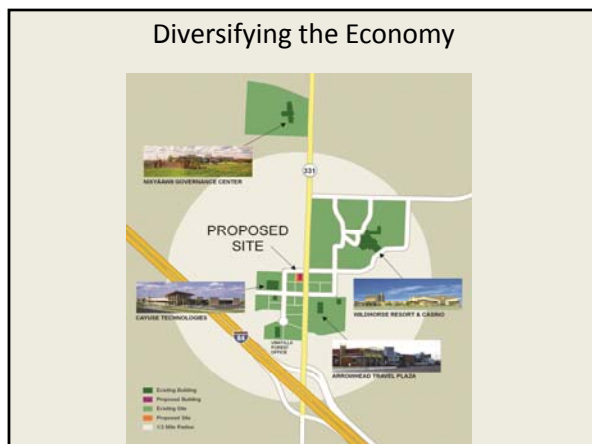
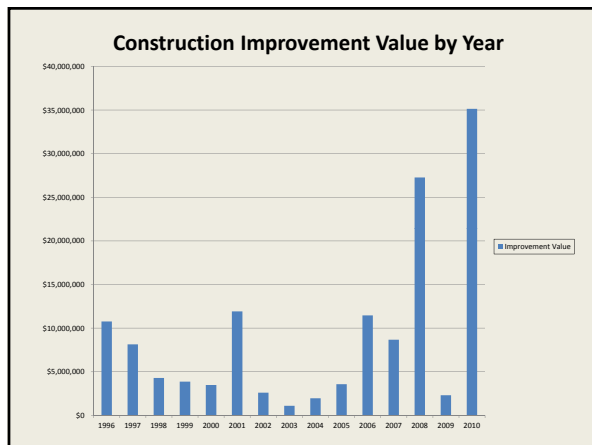
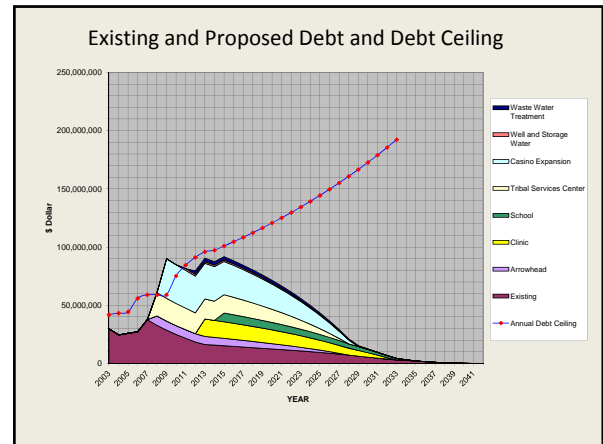
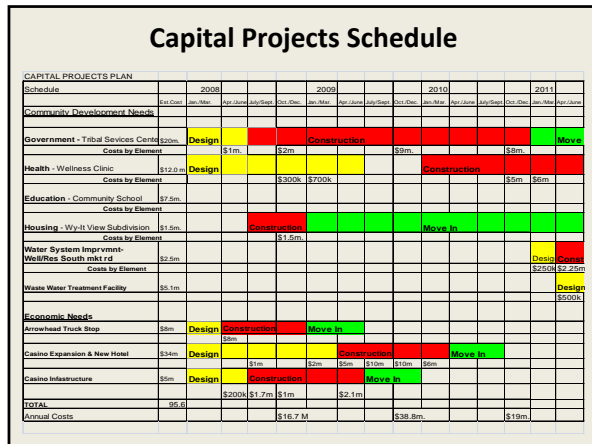
101 Design Tool Inspection Center	102 Industrial Park
103 Emergency Shelter Care Facility	104 Cultural Museum
105 Regional Home for Youth	106 Law & Order Complex
107 Water Treatment Facility (City Water Main)	108 Teenagers/Club Facilities
109 AAU Softball Field	110 Youth Softball Field
111 Water System Improvements/Expansion	112 Sewer System Improvements
113 Administration Office Building	114 Youth Drop-In Center
115 County/Tribal Detox Center	116 Highway House
117 Juvenile Inpatient Treatment Facility	118 Unmanned Aerial Vehicle Facility
119 Unmanned Aerial Vehicle	120 Fish Processing Facility
121 Anishinabe Springs Fish Acceleration Facility	122 Border Patrol Tax Lot
123 Health Clinic	124 Office Space, Park & Trail
125 Surgeon Aquaculture Enterprises	126 Garage, Shop & Storage for FWC & Fisheries
127 Central Computer System	128 Emergency Dispatch
129 Deep Observation Wells & Well Houses	130 Stream Gauging System
131 Police Headquarters	132 Office Space, DMV/Land/Water
133 Police Station, Offices, & Court	134 Water Development & Protection of Spring Sources
135 Parkway (Bike paths, Walking, Trail, etc.)	136 Television Station
137 Various Stream Habitat	138 Cable TV Franchise
139 Bridge Facility	140 FFWA Storage Expansion
141 Bridge/Gauging Facility	142 Forest Products Facility
143 Water Park	144 Swimming Pool
145 Public Golf Course	146 Ice Park
147 Mail Newspaper	148 Public Works Offices
149 Water Land/Landscape Improvements	150 Jail
151 Public Station	152 Maintenance Shop
153 Motel	154 Administration Building
155 Restaurant	156 Personnel Housing Complex
157 Floating Dock	158 Houses for Conference Room, Yellowhawk Clinic
159 Outdoor Pavilion	160 Highway Widening Project
161 Mission Market Expansion	162 Various Office Space
163 General Storage	164 Fire Protection Facility
165 Construction Company	166 Archery Library

TOTAL VALUE = \$53,705,852

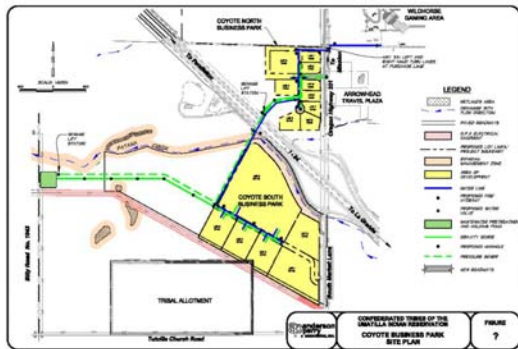
Project known to be completed by 6/1/2008

From: CTUW Capital Improvement Project Master List, Rev. No. 09-02

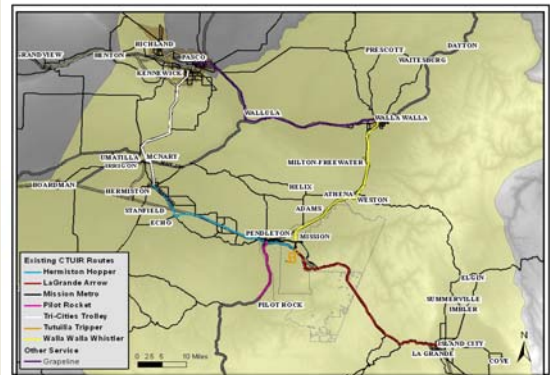




### Coyote North & South Business Parks



### Transit Service Area Map



### Honoring Nations Video Project



### New Transit Headquarters

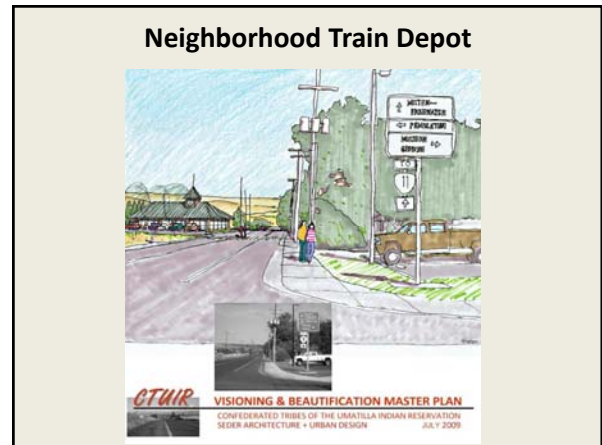
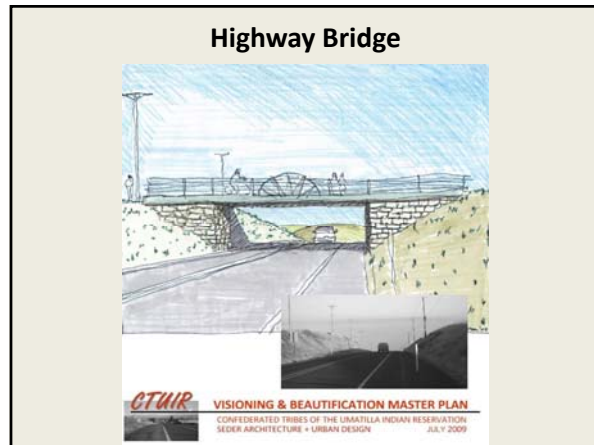
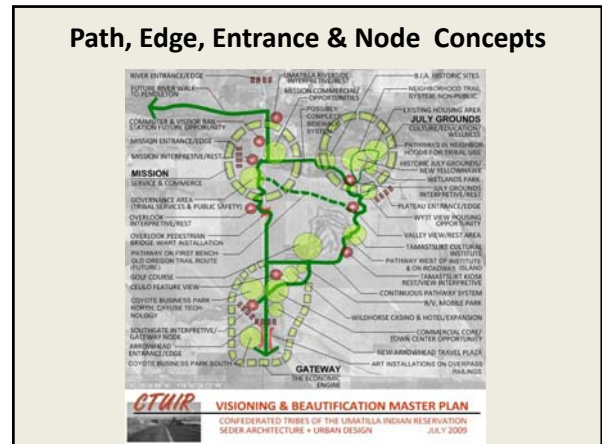


### KCUW Public Service Announcements

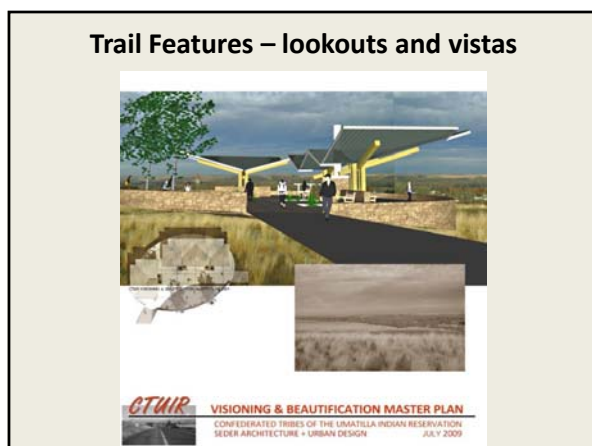
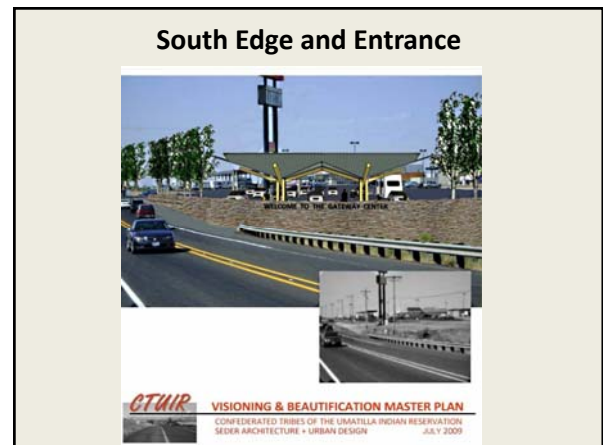
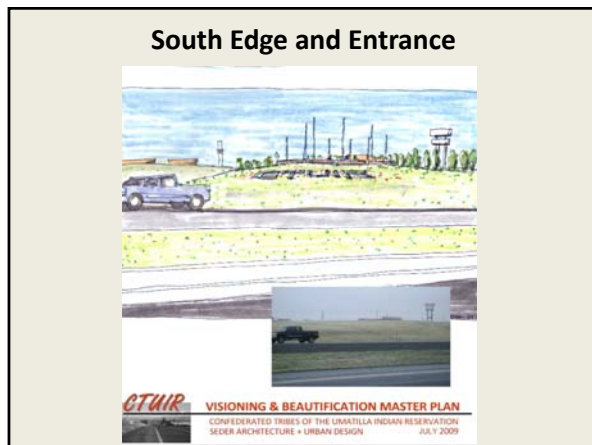
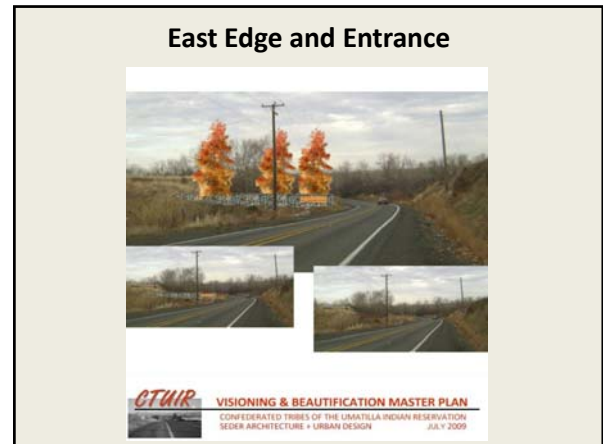


### URHA Bus Shelters









CTUIR Comprehensive Plan available at  
<http://www.ctuir.org/>

Patricia T. Perry, AICP  
Senior Planner, CTUIR-Tribal Planning Office  
46411 Timine Way  
Pendleton, OR 97801  
P & F: 541-429-7518  
pattyperry@ctuir.org






**Spokane Tribe of Indians**  
SUSTAINABLE COMMUNITY MASTER PLAN AND  
IMPLEMENTATION PROJECT

### Six Livability Principles

- Provide More Transportation Choices
- Promote Equitable & Affordable Housing
- Enhance Economic Competitiveness
- Support Existing Communities
- Coordinate Policies and Leverage Investment
- Value Communities & Neighborhoods




### The Spokane Tribe of Indians





### Value Communities and Neighborhoods





Culturally Relevant and Energy Efficient

### AFFORDABLE HOUSING OPTIONS



### New House Lane Housing Cluster



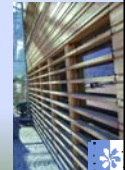

## Martha Boardman Housing Cluster



## Indigenizing with Tule Mat Architecture



Traditional abstracted into contemporary aesthetic

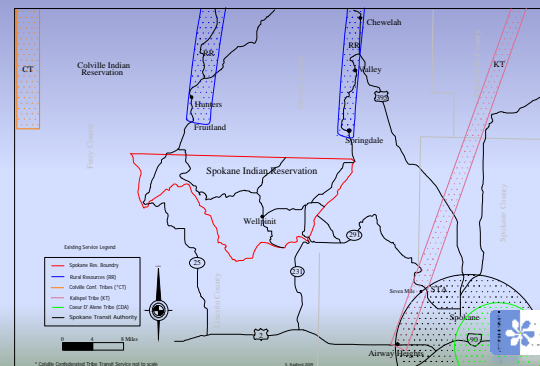


Improving Quality of Life by

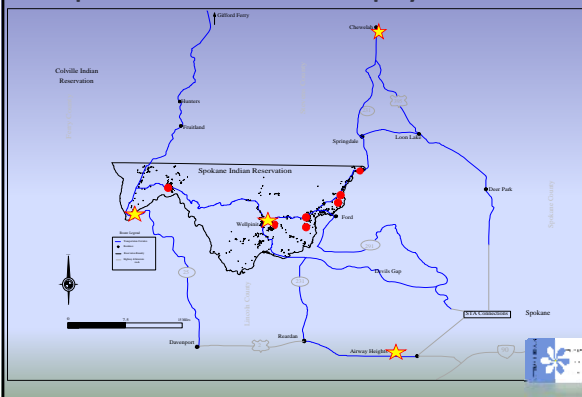
## CONNECTING HOUSING WITH TRANSPORTATION AND EMPLOYMENT



## Surrounding Transportation Systems



## Transportation Corridors and Employment Centers



## Questions?

Presented by

Benjamin Serr, Senior Planner  
Tua Vang, Senior Planner

Chamisa Radford, STOI Planning & Economic Development Director  
Scott Radford, Project Director  
Antithesis Research  
509-258-7100  
info@antithesisresearch.org

