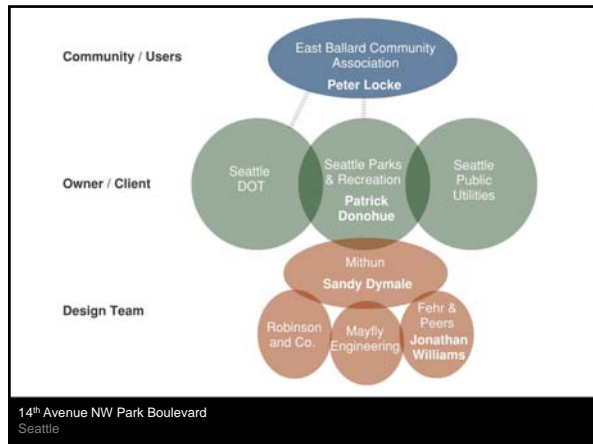


Parking Spaces to Park Places: Ballard's 14th Ave NW Experience








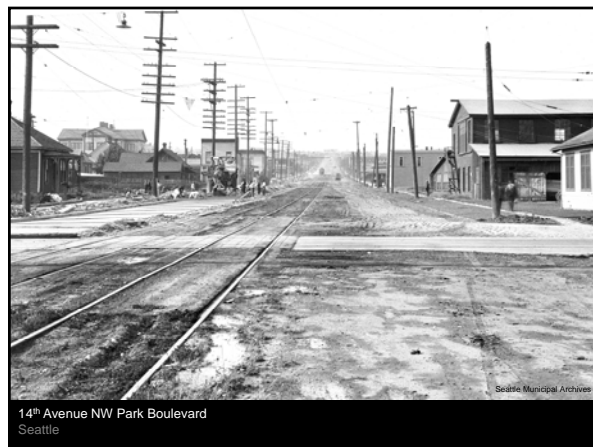
Embrace imagination

Capitalize on the opportunities existing in the public realm

Create an awareness of the relationship between the natural and built environments

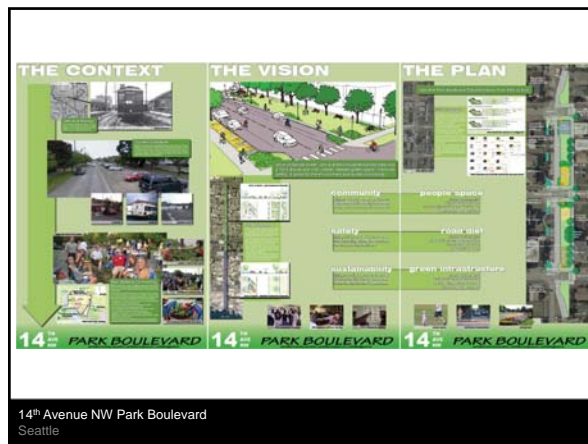


14th Avenue NW Park Boulevard
Seattle





14th Avenue NW Park Boulevard
Seattle



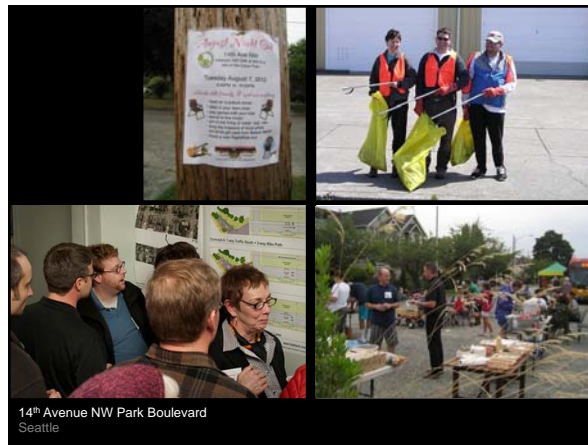
14th Avenue NW Park Boulevard
Seattle



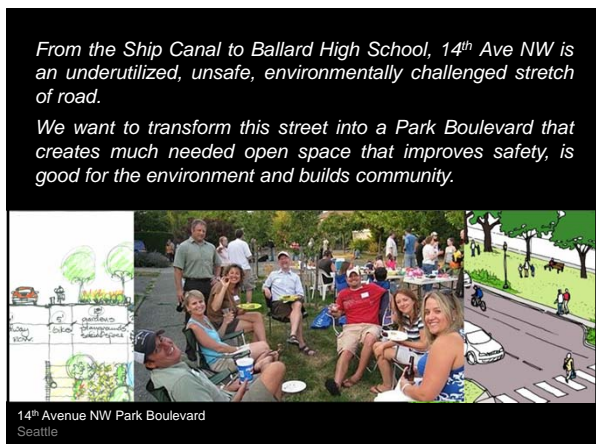
"I'm convinced this is the last opportunity to create community space in that area of East Ballard, we owe it to East Ballard to support this."

Dave Boyd Groundswell NW @ BDC meeting 2/10/2010

14th Avenue NW Park Boulevard
Seattle



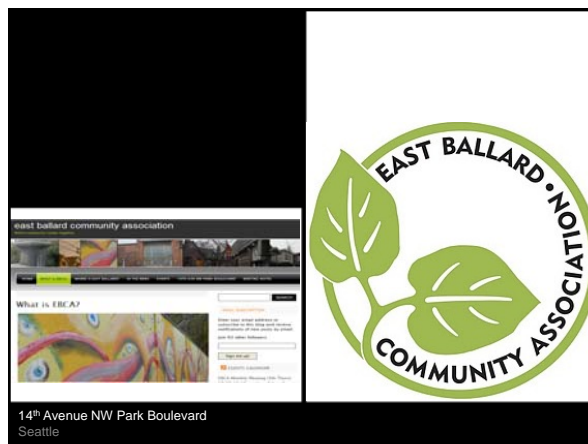
14th Avenue NW Park Boulevard
Seattle



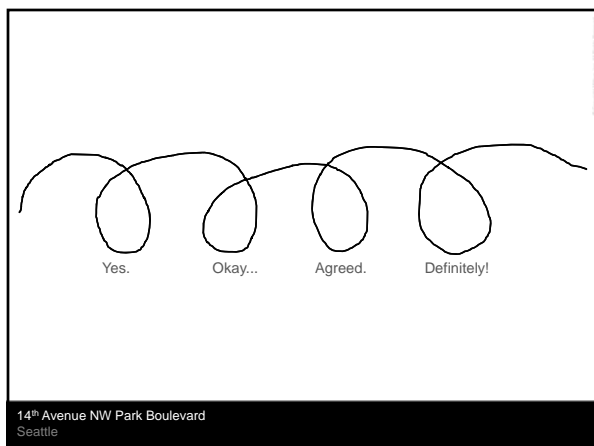
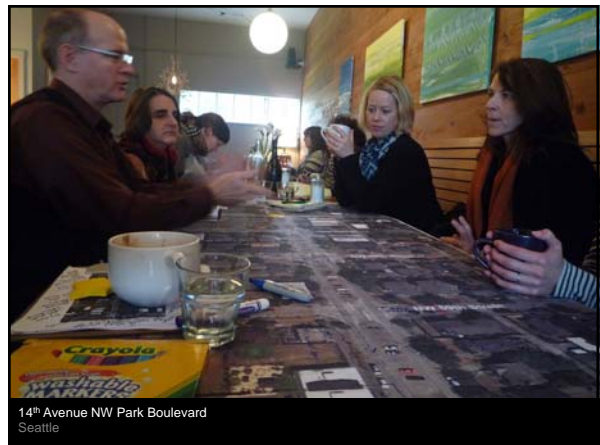
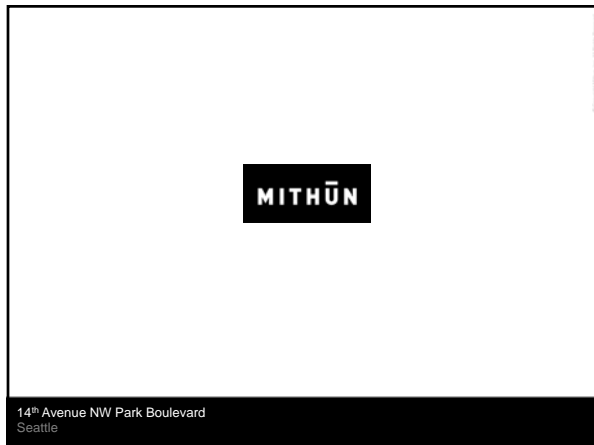
From the Ship Canal to Ballard High School, 14th Ave NW is an underutilized, unsafe, environmentally challenged stretch of road.

We want to transform this street into a Park Boulevard that creates much needed open space that improves safety, is good for the environment and builds community.

14th Avenue NW Park Boulevard
Seattle



14th Avenue NW Park Boulevard
Seattle

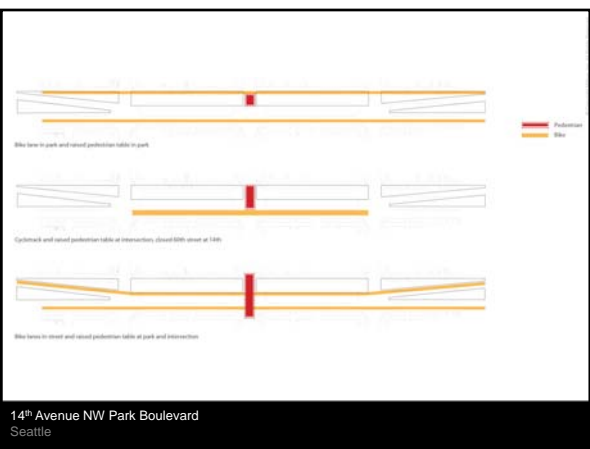
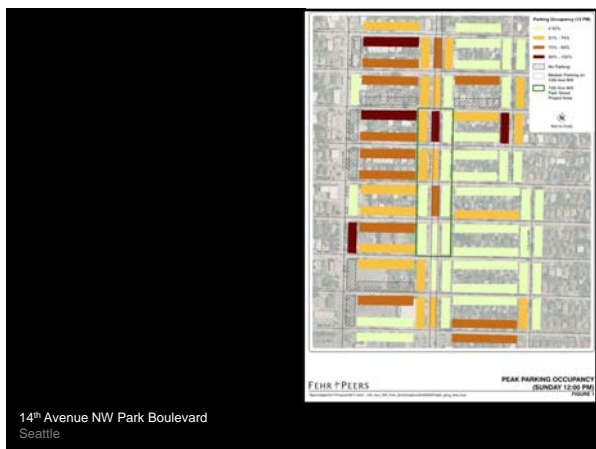
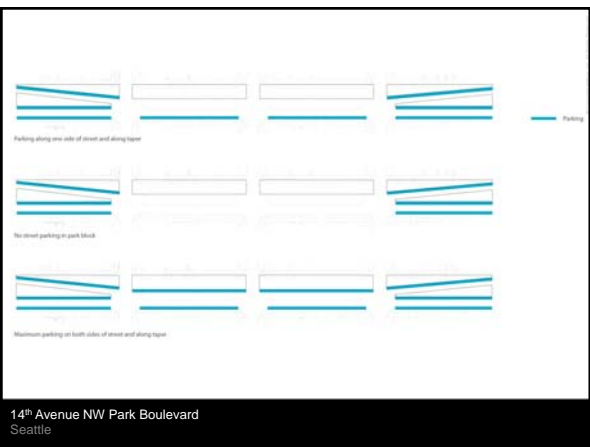
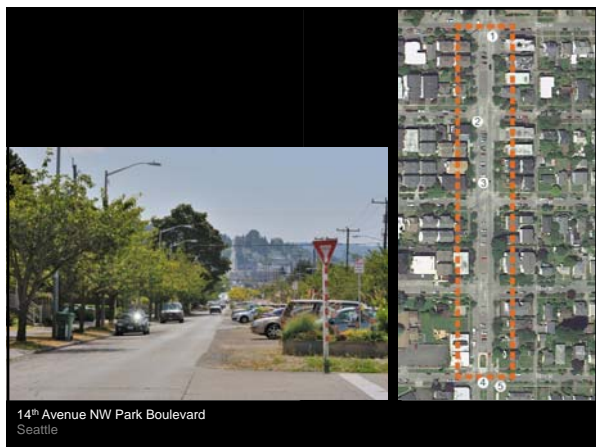


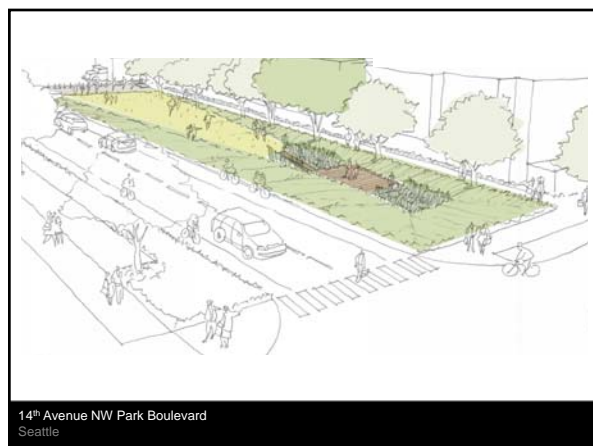
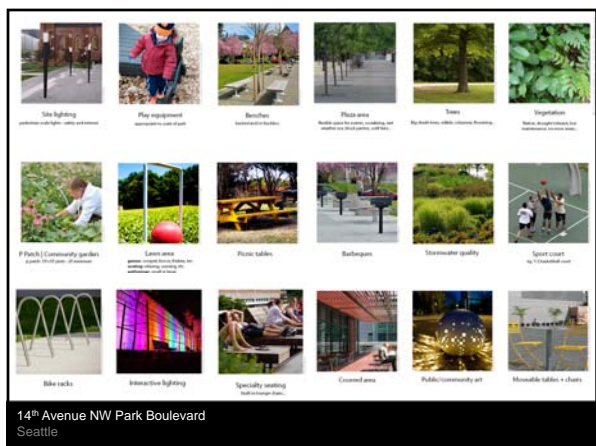
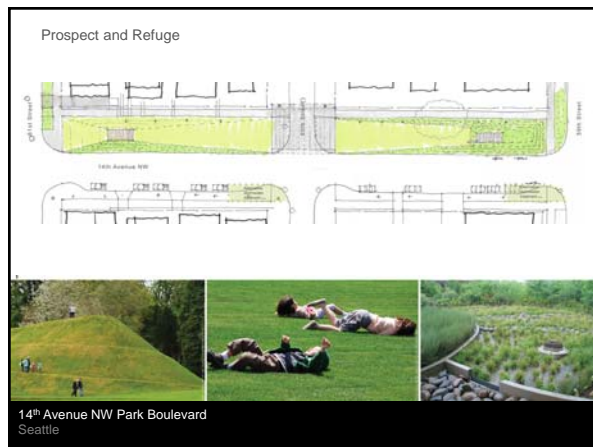
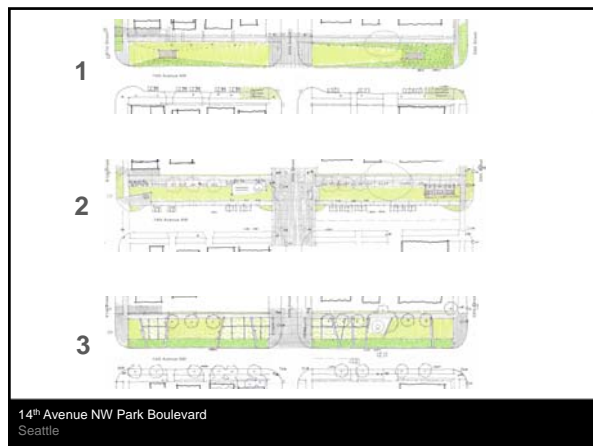
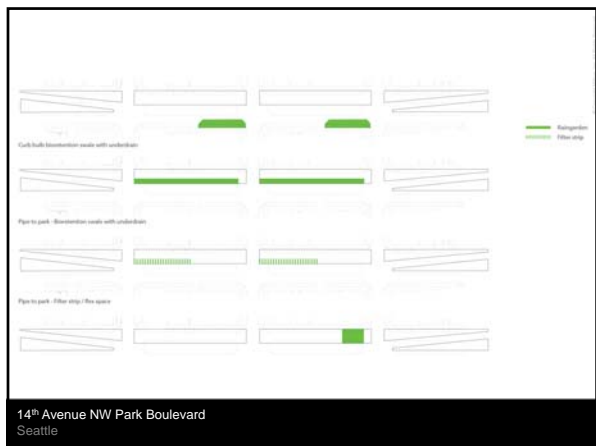


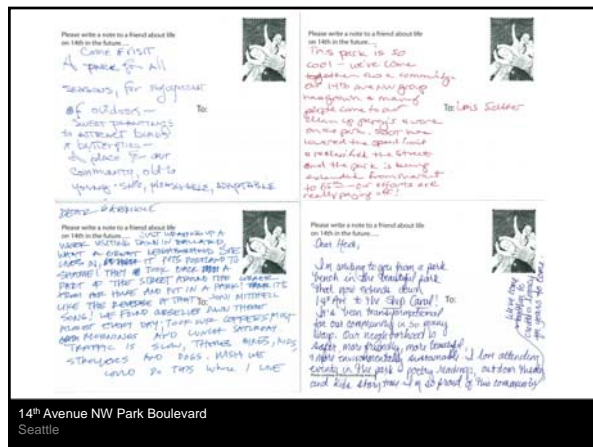
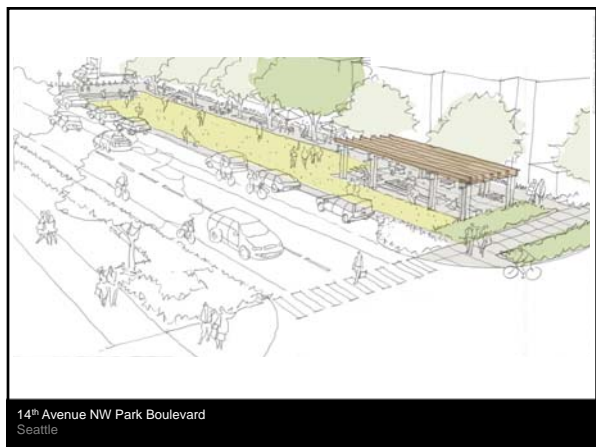
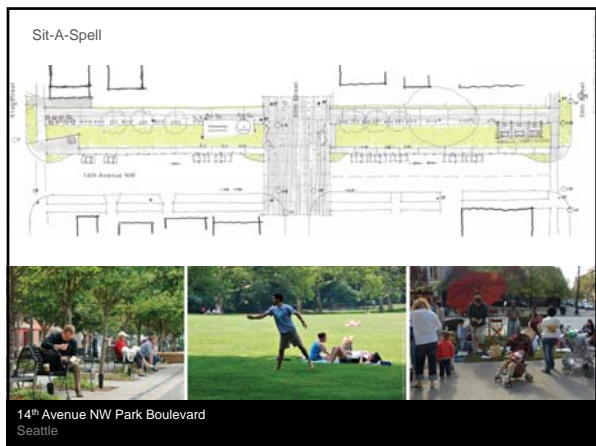
PROJECT GOALS

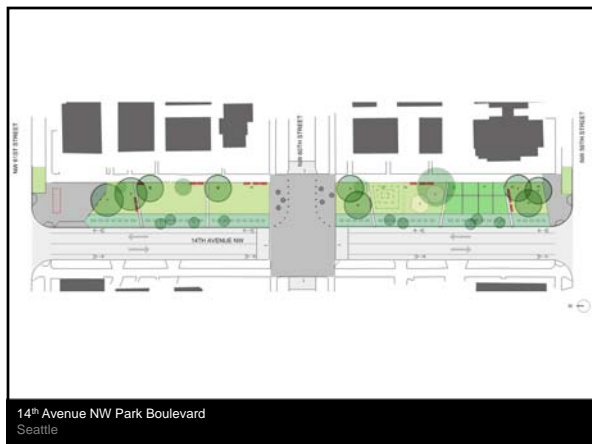
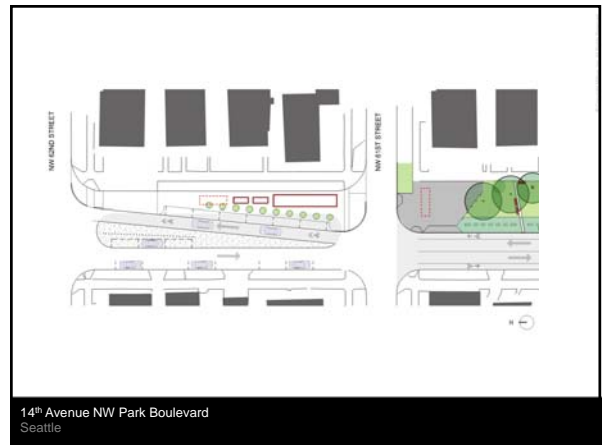
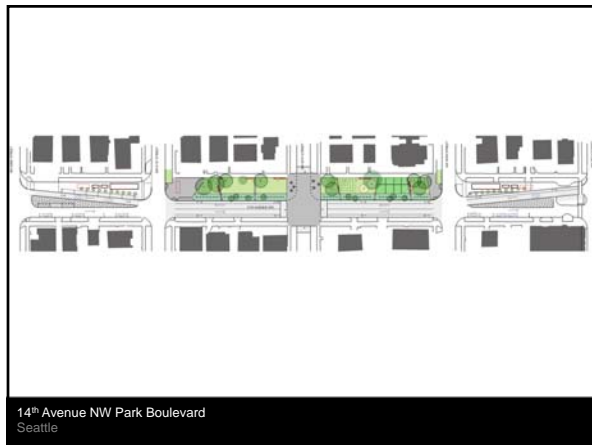
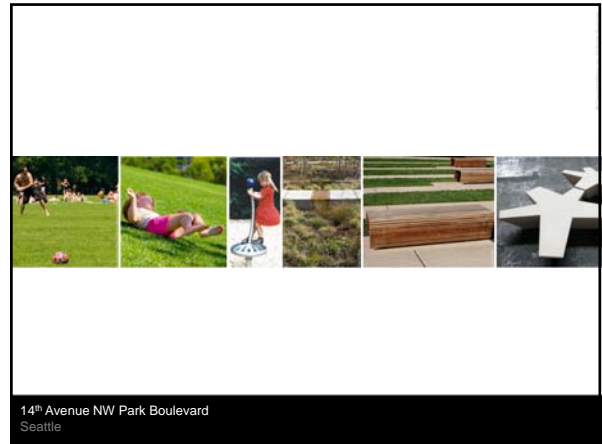
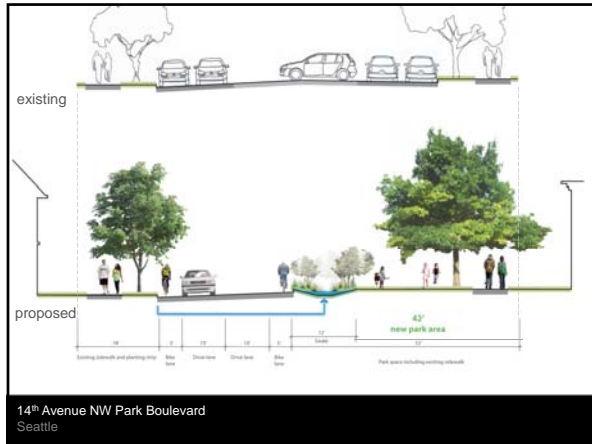
- Maximize park
- Safety
- Retain existing to keep costs low, reduce waste
- Parking for a transit-oriented future
- Cleanse polluted water in the right place
- Integrate stormwater into park and street design
- Be creative with City standards
- Phasing – keep vision for entire corridor
- Test costs early

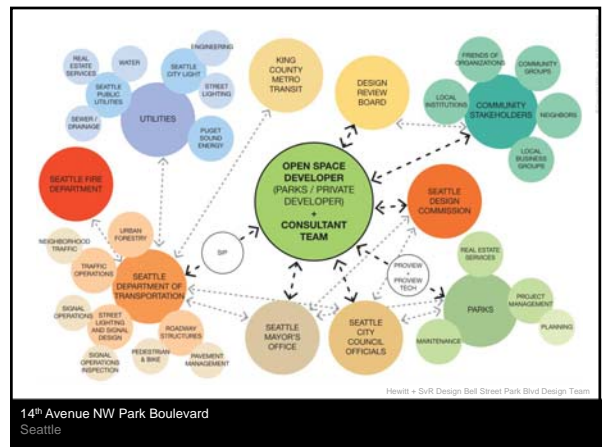
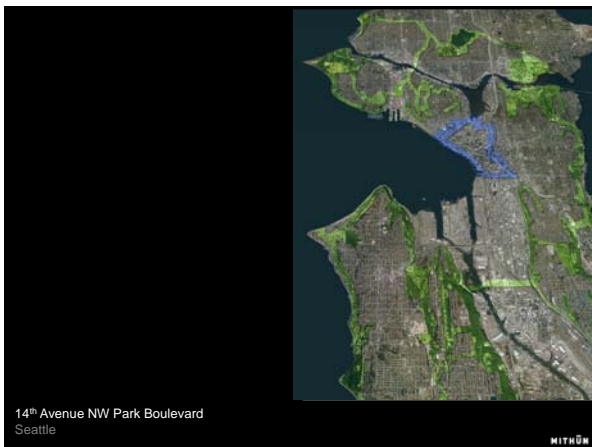
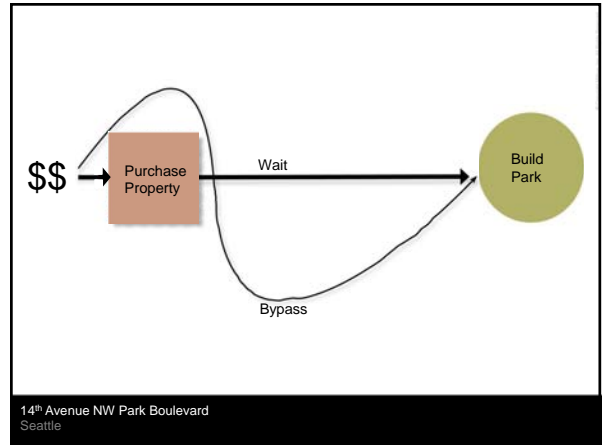
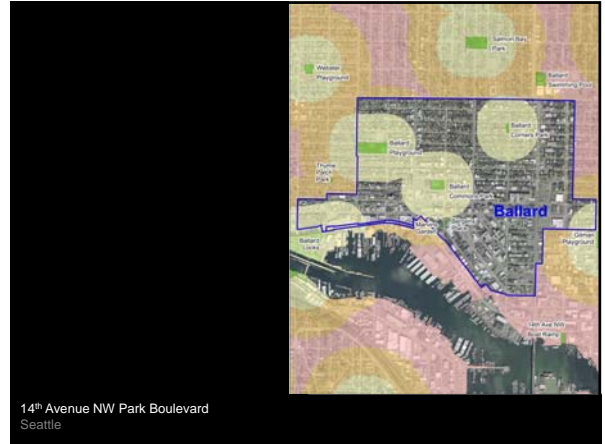
14th Avenue NW Park Boulevard
Seattle













James Court Park and Woonerf Development
Seattle



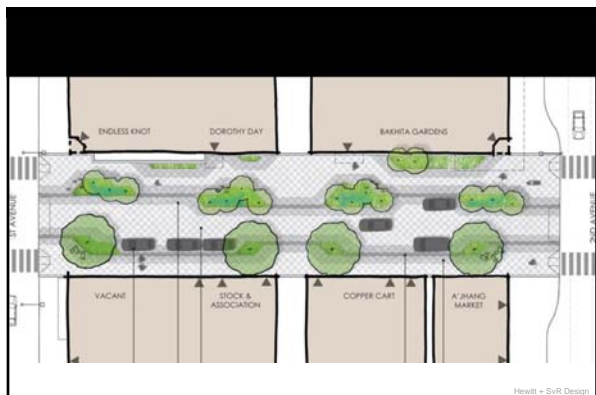
Plan for new Ballard park stirs up battle over parking

A group of Ballard residents is complaining that a new \$1.5 million park along 14th Avenue Northwest will take away precious parking spaces.

A Question of a Park or Parking

On a two block section of 14th Avenue Northwest near Northwest 59th Street, the plan is to slide street traffic over and make room for a city park.

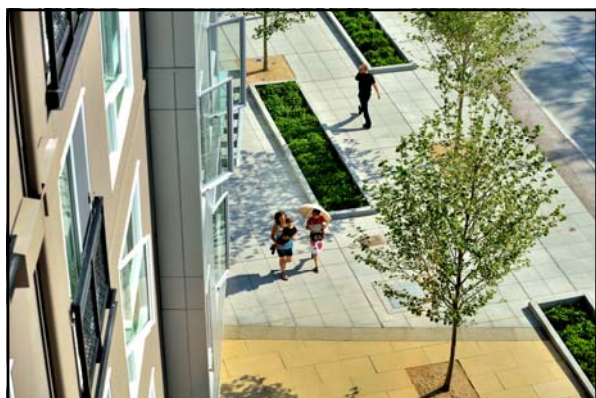
14th Avenue NW Park Boulevard
Seattle



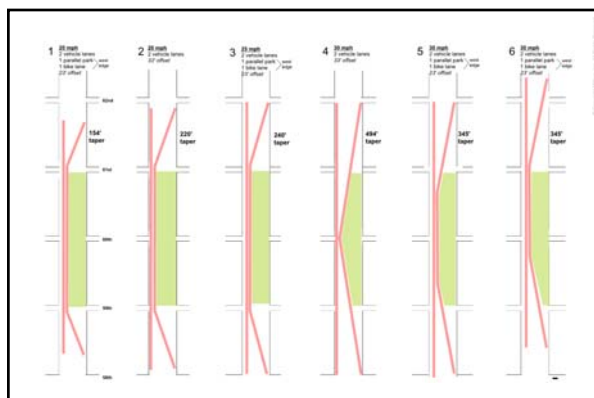
Bell Street Park
Seattle



14th Avenue NW Park Boulevard
Seattle



Taylor 28
Seattle



14th Avenue NW Park Boulevard
Seattle



