

APA Washington Annual Conference, 2009

Historical Perspectives on the  
Planning Profession in  
Washington State:  
Commemorating the Centennial

# The Centennial

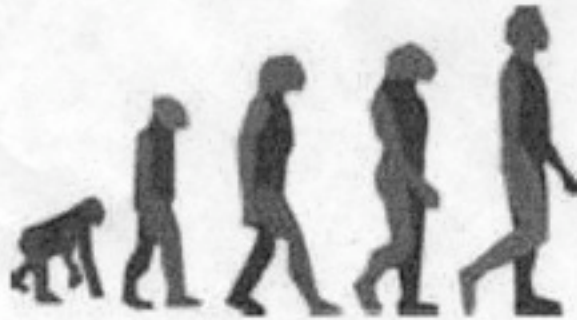
- In May 1909, the First National Conference on City Planning was held in Washington, D.C., with 43 attendees.
- APA is celebrating our profession's 100 years of making great communities.
- WA Senior Action Committee celebrates by tracing our state history.

# Our Speakers

- Jill Sterrett, FAICP Moderator
- Pete Marshall, AICP People
- Brad Collins, FAICP Landmark  
Events
- Fred Hurand, FAICP Context

# Planners We Have Known: Who are the most influential planners, and educators of the last half century?

- Pete Marshall, AICP



**From the mists of prehistoric times a new era of human activity emerged...**



**...Or did it, as some say, appear more instantly??**

1940

1950

1960

1970

1980

1990

2000

**Josh Vogel**  
King Co. Plg. Comm.  
1<sup>st</sup> mbr PNW Chapt. AIP  
Co-author Plg. Enabling Act

**John Spaeth**  
Seattle Plg. Dir.  
1948-72

**Jim Braman**  
DCD  
1969-1974

**Bob Hintz**  
Asst. Plg. Dir.  
Seattle 1952-72

**Bruce Laing**  
King Co.  
1970-79, 1<sup>st</sup>  
Hearing Ex.

**Talbot Wegg**  
Seattle Urban  
Ren'l. 1958-  
64, 2<sup>nd</sup> mbr.  
PNW-AIP

**Ron Clarke**  
WA Dept. Of Plg. & Comm.  
Aff. 1968 -1980's

**Mike Wolfe**  
Edgar Horwood  
UW Plg Prog.

**EWU**  
Undergrad  
Prog '69

**EWU**  
Grad  
Prog.

Washington's  
1<sup>st</sup> Planning  
Enabling Act

1959  
Updated  
Planning  
Enabling Act

**SEPA**  
**SMA**

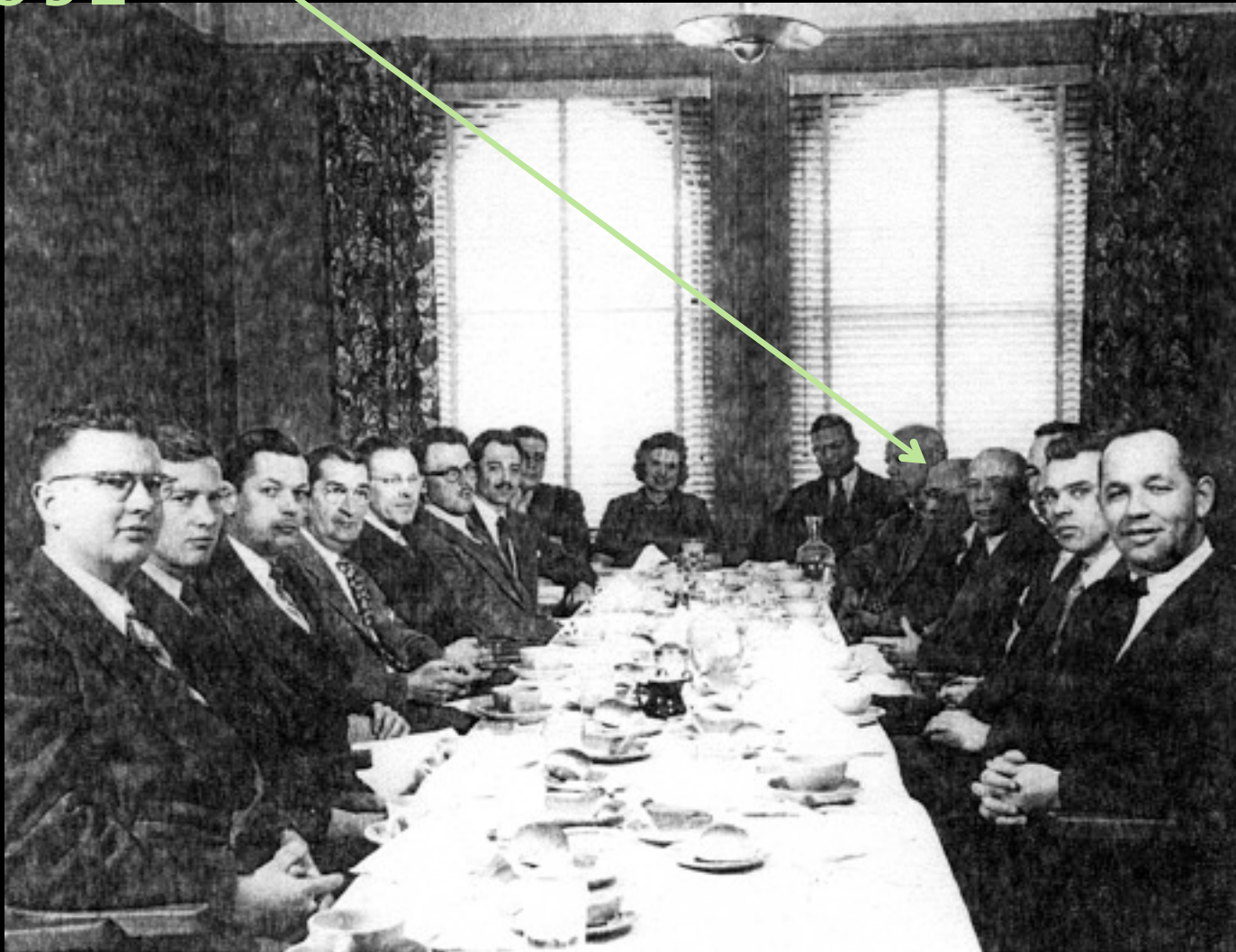
**GMA**

701  
Planning  
Grants  
Prog.

Model  
Cities

Block  
Grants

# Joshua Vogel and other AIP members, 1952



## To Plan, or Not To Plan

... That is the question  
Whether 'tis saner in the end to figure  
The ways and means whereby a county  
profits  
In work and health and higher mode of  
living  
Or think it done by wishing? To grow,  
and fret  
No more; and by haphazard growth to  
end  
Starvation, unemployment, filthy slums  
And all life's problems. 'Tis a  
consummation  
Devoutly to be wished. To grow, to  
dream  
... perchance to drift, yea, that's the rub  
For in that drifting growth what havoc

Poem reprinted in the Jan. 1953 Long Ranger, the PNW  
Chapter AIP's periodic newsletter. The poem was  
originally included in the King County Planning  
Commission's Annual Report for 1934-35.

Pacific Northwest Chapter  
AMERICAN INSTITUTE OF PLANNERS

THE INSTITUTE IS A PROFESSIONAL ASSOCIATION, THE PURPOSES OF WHICH ARE:

- TO STUDY AND ADVANCE THE SCIENCE AND ART OF PLANNING
  - TO FURTHER THE INTERESTS OF THE PROFESSION
  - TO PROMOTE FELLOWSHIP AMONG ITS MEMBERS
- THE PLANNING WITH WHICH THE INSTITUTE IS CONCERNED IS THAT OF UNIFIED DEVELOPMENT OF URBAN COMMUNITIES AND THEIR ENVIRONS AND OF STATES, REGIONS, AND THE NATION, AS EXPRESSED THRU DETERMINATION OF THE COMPREHENSIVE ARRANGEMENT OF LAND USES AND OCCUPANCY AND THE REGULATION THEREOF.

## PACIFIC NORTHWEST CHAPTER NEWS

JAN. 1952

### BIG WINTER PROGRAM IN A. I. P.

**January Meeting:** A regular monthly meeting has been scheduled for January 18th at 12:15 pm at the Seattle Chamber of Commerce Luncheon. Professor Richard G. Tyler will speak about his experiences on his recent trip to the Middle East. Prof. Tyler should have some interesting comments with his long experience in planning and engineering. Postcard reminders will be sent out before this meeting, but save the date now.

**February Meeting:** Tentative arrangements have been made for a Friday afternoon and evening field trip to Tacoma. Bud Poole is arranging the local details. The date has not been definitely determined but it may be February 15th. The program will probably include a visit to the Planning Commission offices and an evening Chapter meeting. This should be a good trip; when more details are available the membership will be notified.

**Spring Field Trip:** Later in the spring it is hoped arrangements can be made for a field trip to the "planned city" (Longview, Washington). This would be a good opportunity for Seattle and Portland members to get together again. More on this later.

### NOVEMBER MONTHLY MEETING AT PRESIDENT'S HOUSE

The regular monthly meeting of November was held at the home of Chapter President Floyd Jennings. There was an informal discussion of the National A.I.P. Annual Meeting date and a Chapter statement was agreed upon. A copy of this will be sent to all members. Most of the meeting, however, was devoted to a social hour well lubricated by Floyd's bar products. As predicted, most of the Seattle membership dropped by.

### DECEMBER 5th EXECUTIVE BOARD MEETING (Jennings, Cone, Spaeth, Barnes, Vogel, present)

During the meeting John Spaeth discussed the problem of when to hold the A.I.P.'s Annual National Meeting. Jim Barnes presented his proposed program for the coming months and Josh Vogel discussed proposed changes in the Chapter Constitution. The meeting was held at Blanc's on December 5th.

#### PRESIDENT

FLOYD M. JENNINGS  
BUREAU OF GOVERNMENTAL  
RESEARCH AND SERVICES  
UNIVERSITY OF WASHINGTON  
SEATTLE 5, WASHINGTON

#### VICE PRESIDENT

FRED CUTHBERT  
SCHOOL OF LANDSCAPE ARCH-  
ITECTURE AND PLANNING  
UNIVERSITY OF OREGON  
EUGENE, OREGON

#### SECRETARY-TREASURER

JOHN E. CONE  
KING COUNTY PLAN. COMM.  
ROOM 450-1  
COURTY-CITY BUILDING  
SEATTLE 4, WASHINGTON

#### BOARD MEMBERS

PAUL THIERY SEATTLE  
COGAR HERRICK SEATTLE  
J. HAYLETT BELL PORTLAND  
JOHN EDGAR CURRIE LEWIS  
WALLA WALLA

Pacific Northwest Chapter News  
January 1952, page 2

DUES

A few members of the Chapter have not paid their annual dues (tsk, tsk) Please send them to the Secretary-Treasurer and save the expense of individual postal card notices at the ~~now~~ rate of 2¢. The price is but \$3.00 a year.

JOBS IN TACOMA

Tacoma has announced Civil Service Examinations for the following positions:

Principal Planner	5 yrs min. experience	\$490-590 per mo.
Associate Planner	2 " " "	\$337-435 " "
Assistant Planner	1 " " "	\$290-374 " "

Application blanks may be obtained from the Civil Service Commission, Rm 100, City Hall, Tacoma 2 Washington. They must be filed by 4 pm January 30th.

# King County Planning and Zoning Issues, c. 1940

... Folks living in the area around the City of Seattle... they were in the chicken business, were raising rabbit... pigs... goats... Although they were in the small animal business, nevertheless, they loved their homes and land and did not want to be crowded out again nor did they want slaughterhouses or industrial plants coming into their district.

Excerpts from Joshua Vogel's presentation to the American Planning and Civic Association's National Conference on Planning, San Francisco, Calif. July 8-11, 1940, pp. 257 ff of the conference proceedings

# King County Planning and Zoning Issues, c. 1940

“... From 1935 to 1937 the Commission was very busy trying to obtain... basic information, mapping land use, population, location of flood plains, the publicly-owned lands, the highway system, etc. ... We asked for help of committees from the real estate board, engineers and others...”

Excerpts from Joshua Vogel's presentation to the American Planning and Civic Association's National Conference on Planning, San Francisco, Calif. July 8-11, 1940, pp. 257 ff of the conference proceedings

# King County Planning and Zoning Issues,

c. 1940

The mistakes made by the City of Seattle have thrust the people out into the county for better living conditions... under [county] regulations which give a population density of 4 people per acre... Seattle shows 50.5 people per acre in the... family dwelling district... apartment house districts were built up to 141.0 people per acre. Although Seattle has still one-half of its area vacant, the areas that are used are overcrowded...”

Excerpts from Joshua Vogel's presentation to the American Planning and Civic Association's National Conference on Planning, San Francisco, Calif. July 8–11, 1940, pp. 257 ff of the conference proceedings



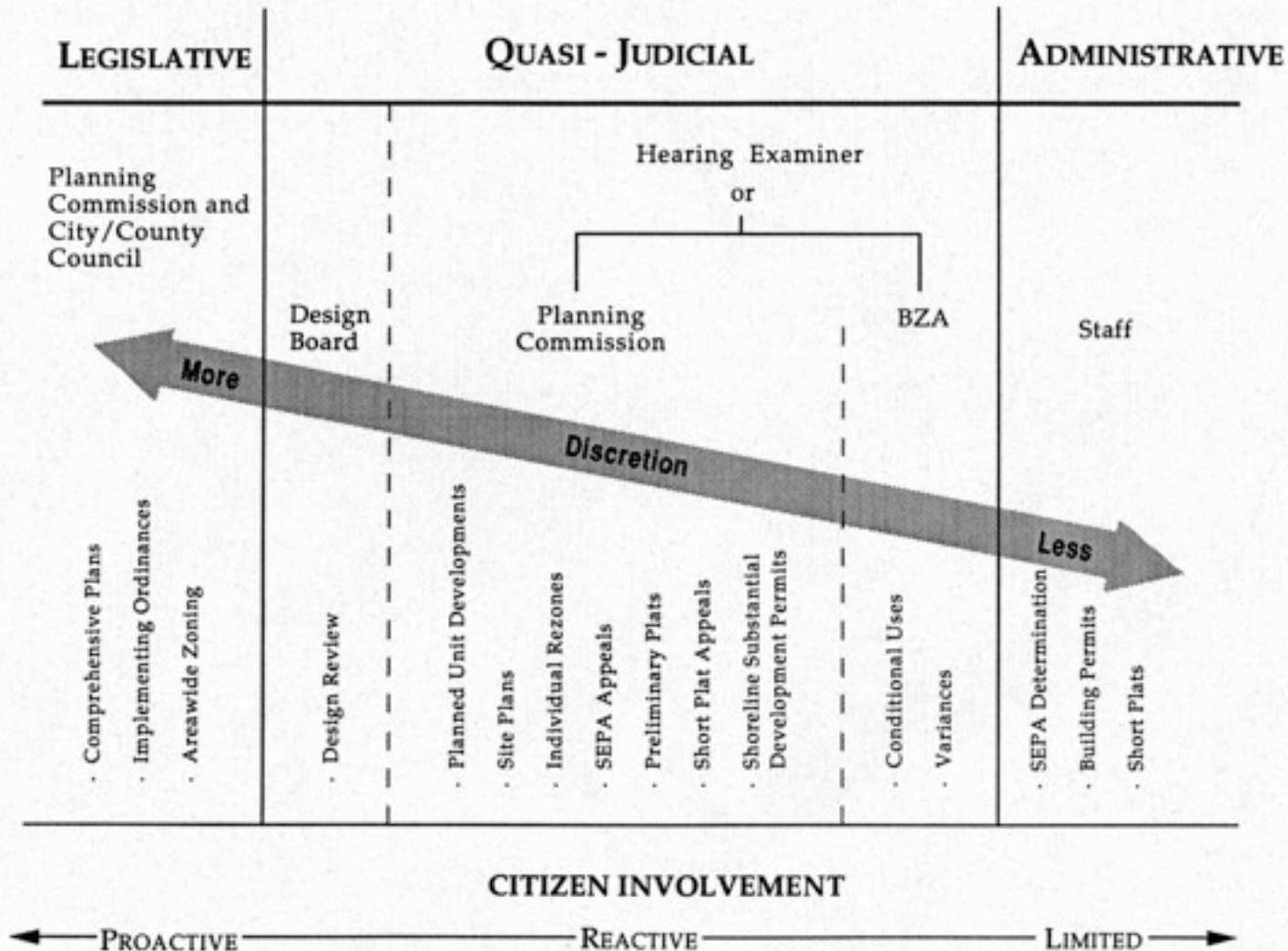
Robert F. Hintz

Marian L. Hintz



Bruce Laing, FAICP

# PLANNING AND DEVELOPMENT DECISION MAKING



McConnell/Burke, Inc.  
10604 N.E. 38th Place, Suite 227  
Kirkland, WA 98003  
(206) 827-6550



**Ron Clarke**

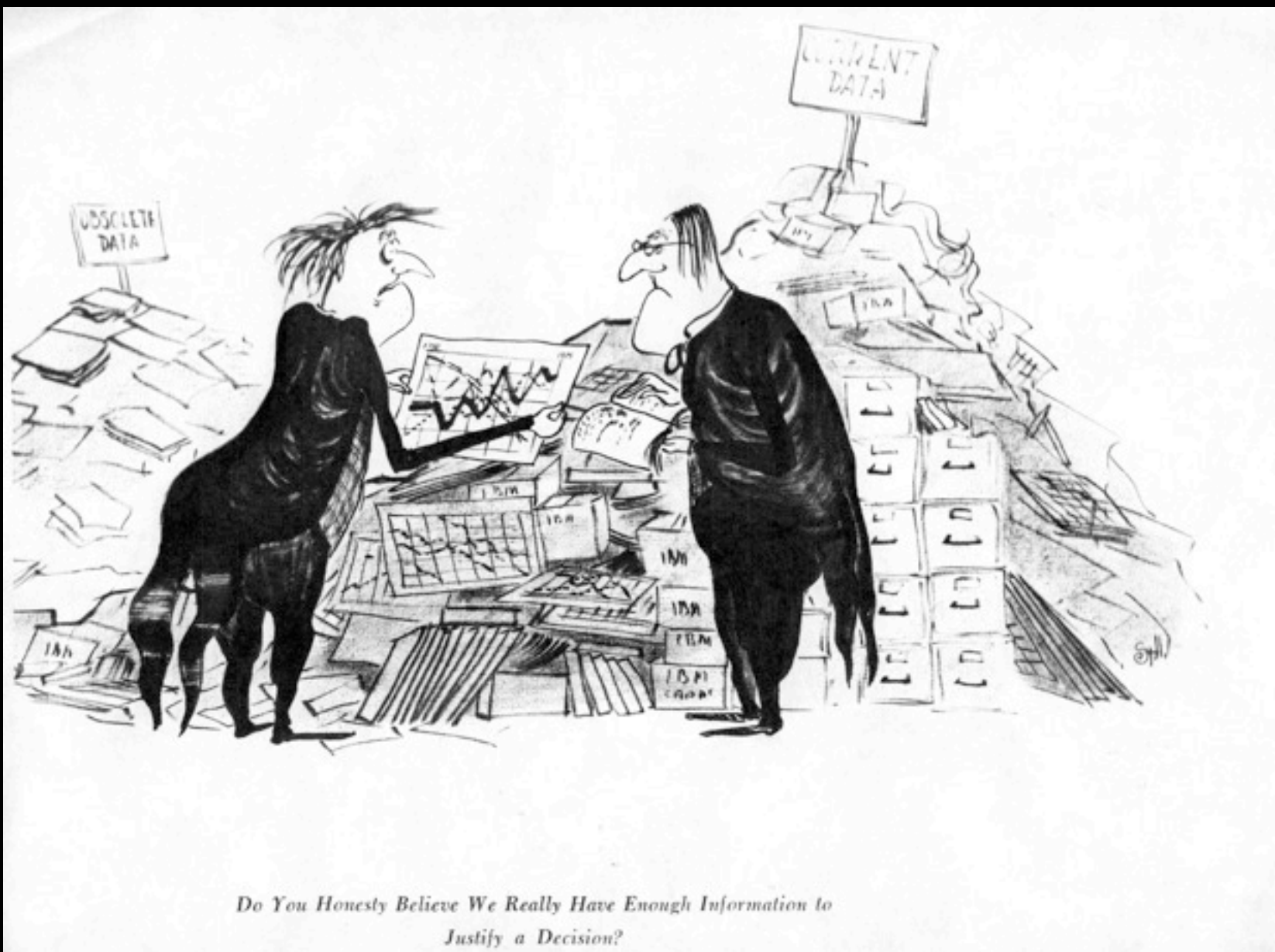
Ron Clarke



Thursday, December 10, 2009



**Hedman & Bair, And on the eighth day**



**Hedman & Bair, And on the eighth day**

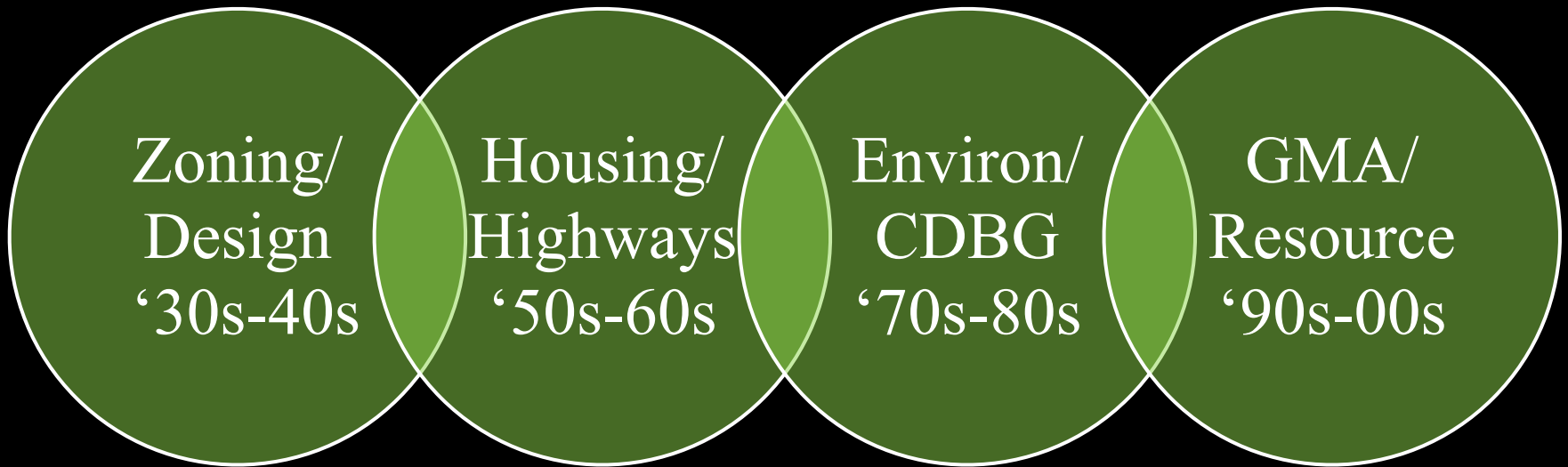
# The Evolution of the Planning Profession in Washington: Legislation & Education

- Brad Collins, FAICP

# The History of the Planning Profession in the State of Washington

- Identifiable historical landmarks in planning practice
- Practice followed legislation and public funding
- Correlation between academia and practitioners
- Major planning paradigm shifts per 20 years or so

# Legislative Landmarks



# Milestones in Planning Legislation

1935

- **WA Planning Commissions Act**
  - Enabled zoning & Planning Commissions

1954

- **Housing Act of 1954**
  - Section 701 provided funds local planning

1956

- **National System of Interstate & Defense Highways**
  - Created Federal highway system

1959

- **WA Planning Enabling Act**
  - Defined how County's create Comprehensive Plans

# Milestones in Planning Legislation

1966

- **Demonstration Cities and Metropolitan Development Act**
- Established Model Cities program

1971

- **WA SEPA and SMA legislations adopted**

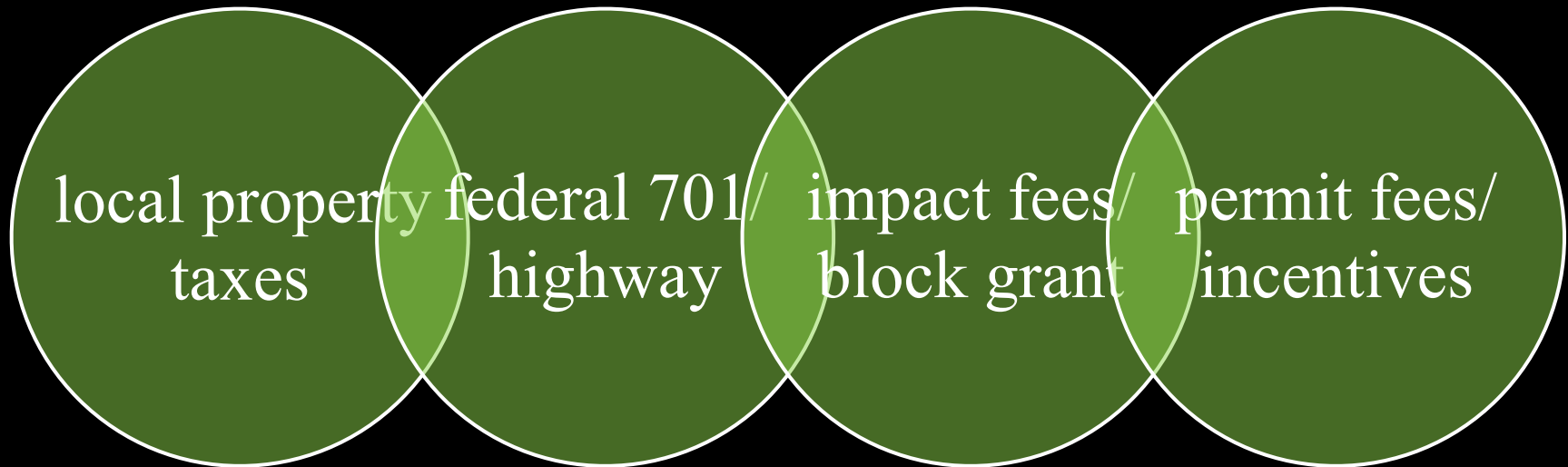
1974

- **Housing Act of 1974**
- Created Community Development Block Grant Program

1990

- **WA Growth Management Act**
  - Established planning for growth, resource lands & critical areas

# Public Funding



# ■ Academic Correlation

## Planning Tools

- '30–40 – Zoning Plans and city infrastructure
- '50–60 – Comprehensive Land Use Plans
- '70–80 – Project reviews & Neighborhood Plans
- '90–00 – GMA Comprehensive Plans

## Academic Focus

Architectural design & social engineering  
Urban design & transportation planning  
Environmental & community planning  
Growth management & sustainable development

# The Impact of Planning Requirements on the Planning Profession

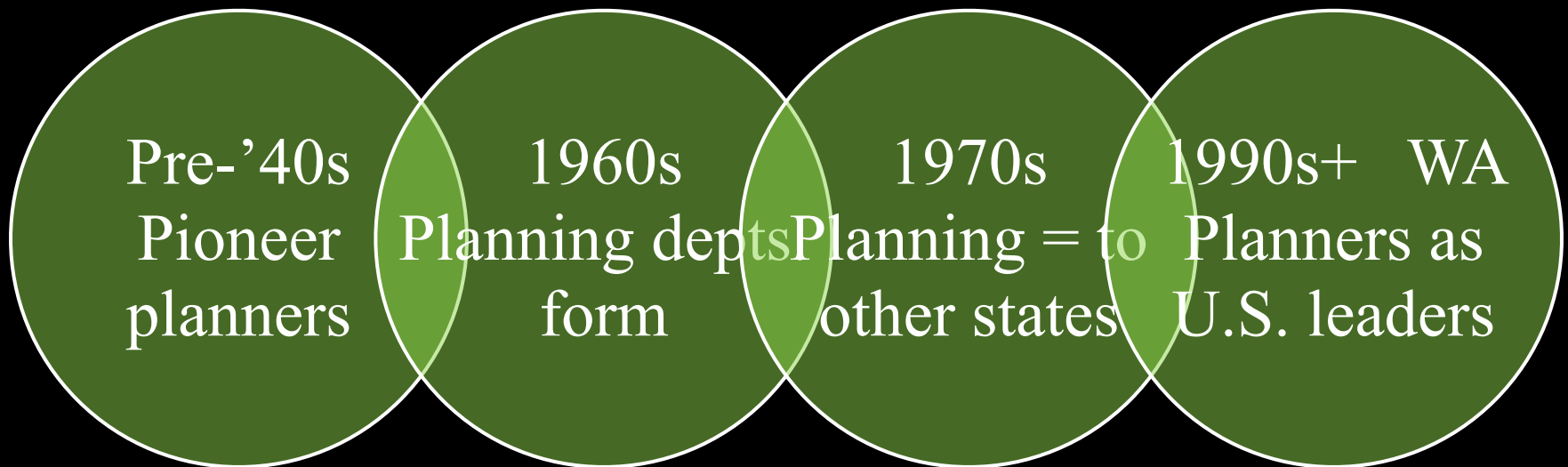
## Requirements & Legislation

- '30–40 – Planning Commissioners Act
- '50–60 – Federal 701 Planning & Highway Acts
- '70–80 – SEPA & block grant
- '90–00 – GMA & Critical areas; sustainability, climate change

## Planners & their Roles

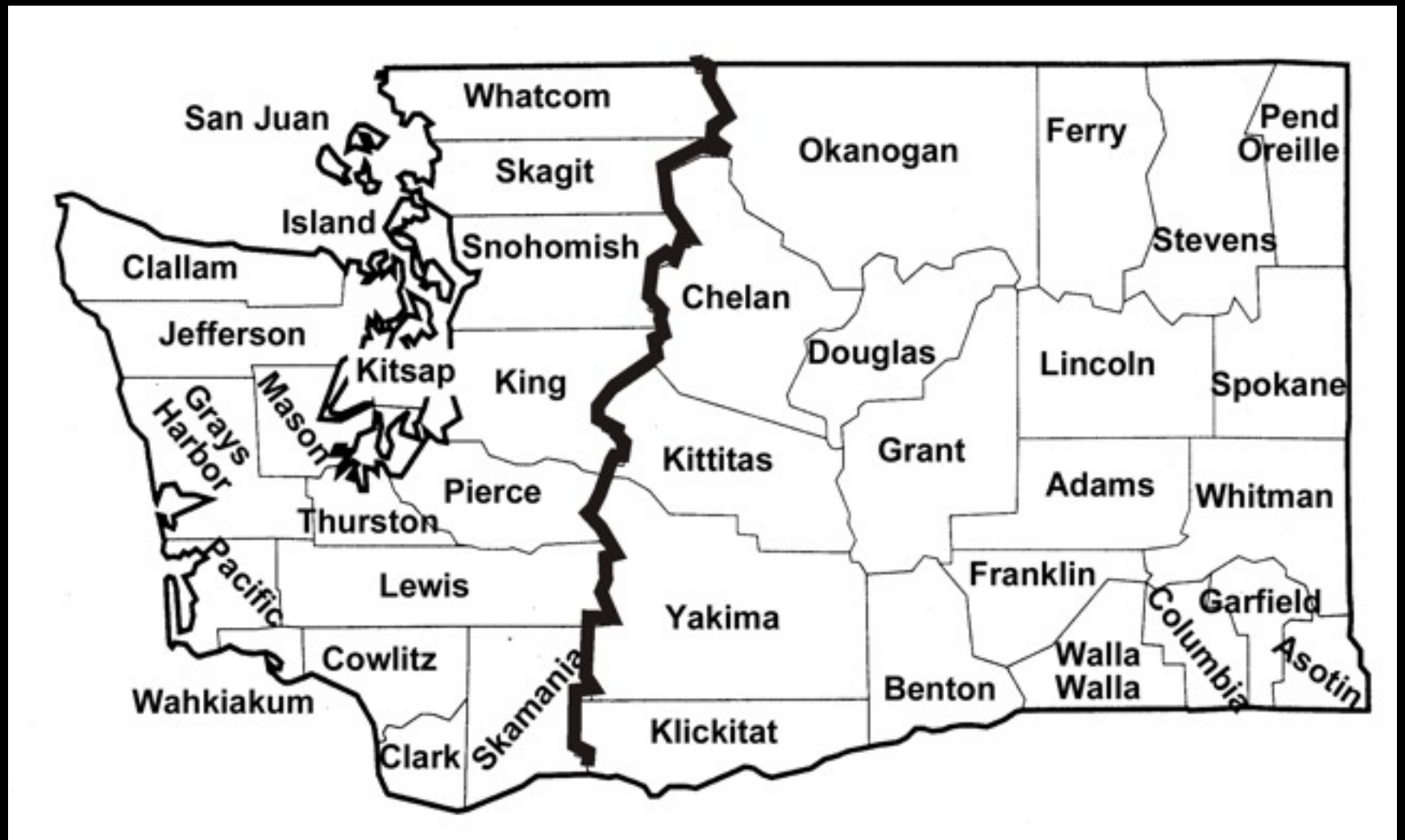
- Mostly architects involved in planning
- Growing # of local planners and departments formed
- Fully staffed planning departments
- Next generation of planners replacing those of 1970s

# The History of the Planning Profession in the State of Washington



# The Pacific Northwest Regional Context for the Planning Profession: How the past is shaping the future

Fred Hurand, FAICP,  
Professor,  
Eastern Washington  
University

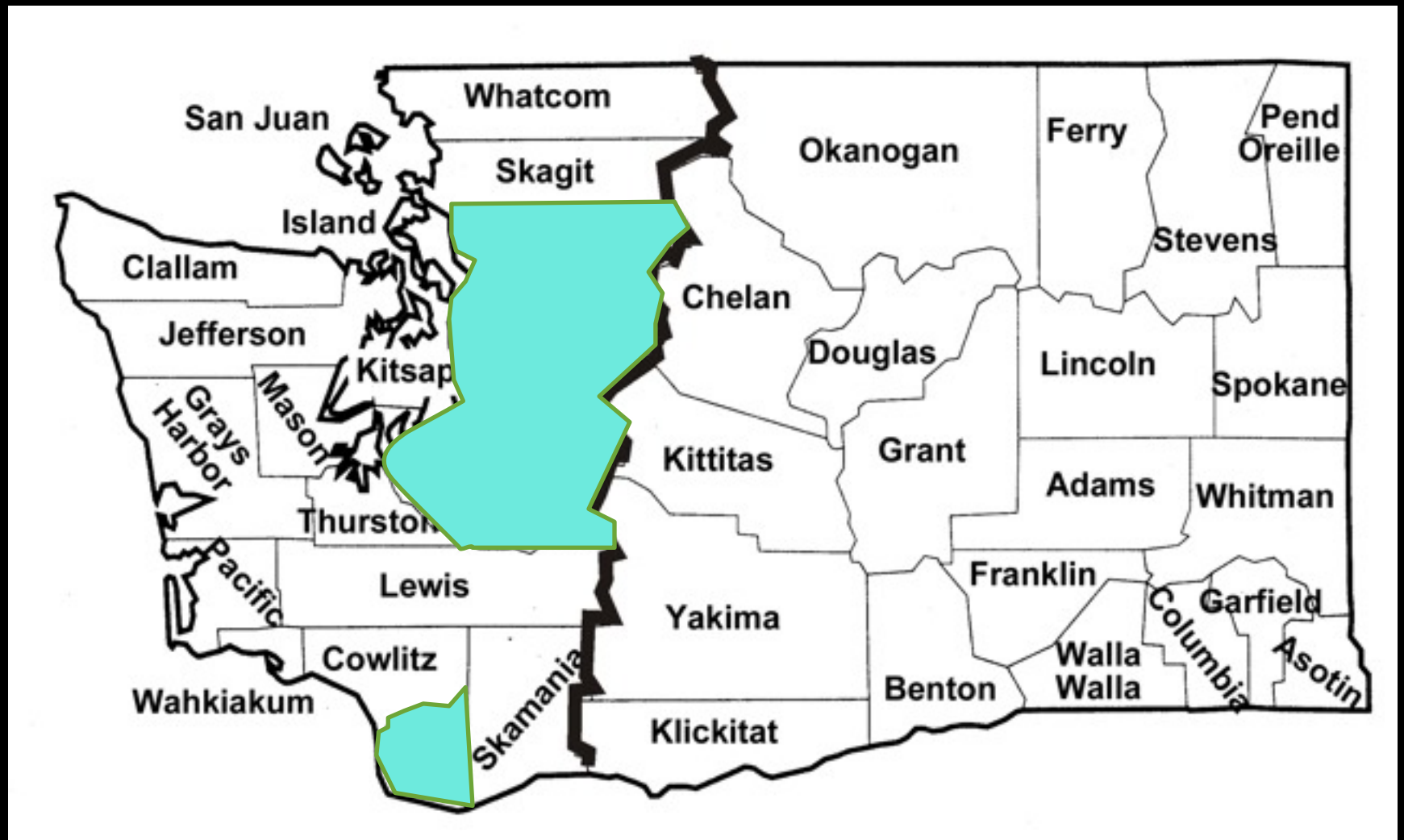


**WESTSIDE**

**EASTSIDE**

# State, Westside, and Eastside Population 1960 to 2008

# Average County Densities in Persons Per Square Mile



**WESTSIDE**

**EASTSIDE**

# Eastside v. Westside Densities

## Less Pierce, King, Snohomish, and Clark Counties

# Where is Planning Headed?

- Major issues
  - Economic recession
  - Energy security/peak oil
  - Climate change
  - Depletion of resources
  - Social Equity
- Role of planners to integrate these

“The significant problems we have cannot be solved at the same level of thinking with which we created them”

# What's next for this history effort?

- Planners of Eastern WA
- Planning leaders – 1970 and beyond
- Role of WA planners at national level
- Trends in regulation & incentives
- Resurgence of property rights
- Tribal sovereignty & economic

# Discussion

What would you add:

- which planners?
- what events?
- long-term trends?

# THANK YOU!

- Jill
- jill.sterrett@gmail.com
- Pete
- pmarshall@q.com
- Brad
- bandjcol@olypen.com
- Fred