



## **WHY Community Gardens?**

CCAN promotes sustainable living in the Mid-Columbia and is a hub for information sharing and action.



# Gardens Can Improve Community Health

Social	Emotional	Physical
--------	-----------	----------



# Public Land?

Higher beneficial use for public land.

Vegetables need less water than turf should be a net savings to a city.

Improves community cohesion,  
could lessen crime and vandalism  
if local kids are invested.



# Private Land?

Might be easier.

Might be a better location.

Liability is probably a bigger issue.





# Site Selection?

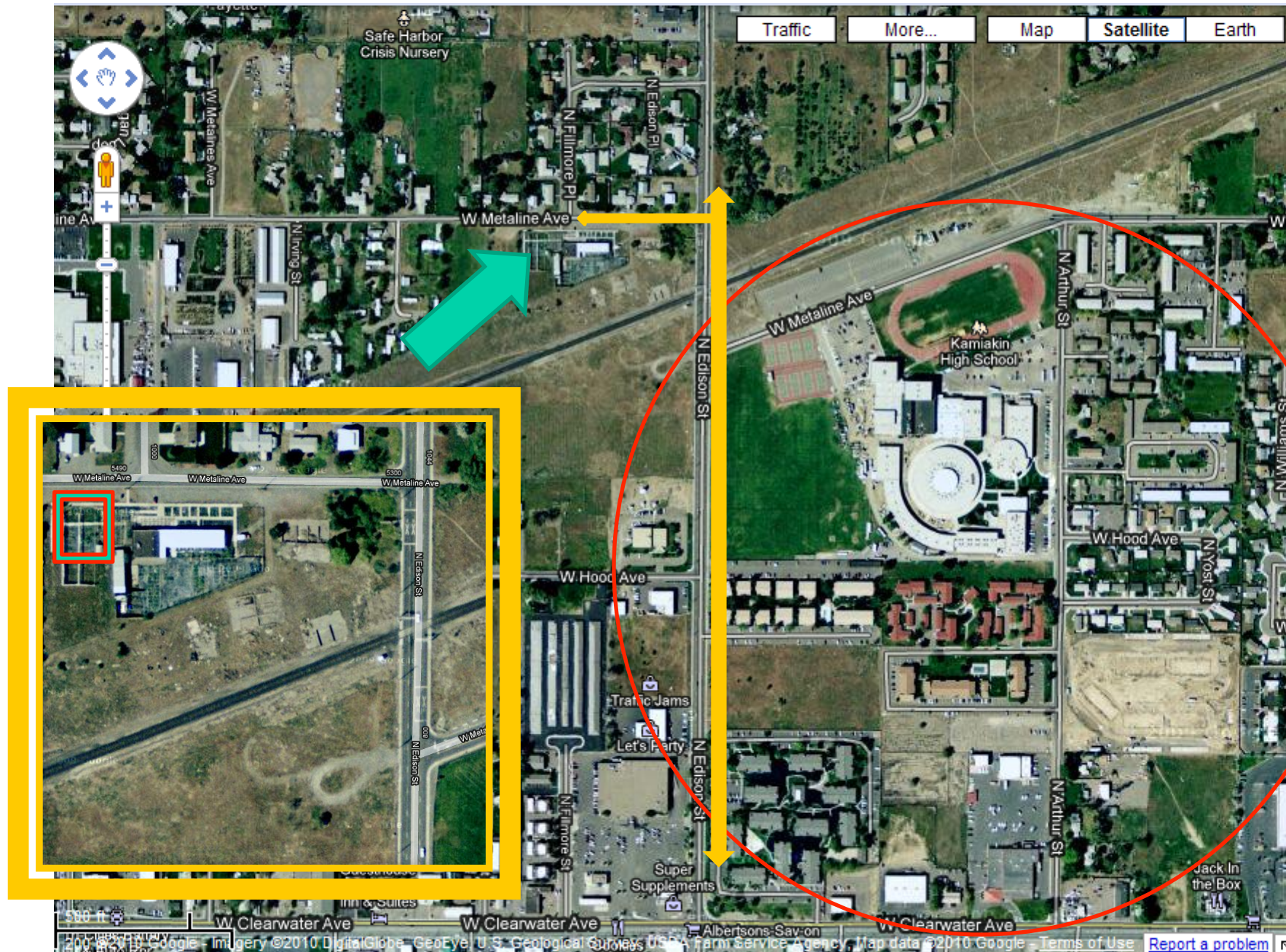
Map possible locations in group

Look at easements

Proximity to neighborhoods,  
apartments, churches



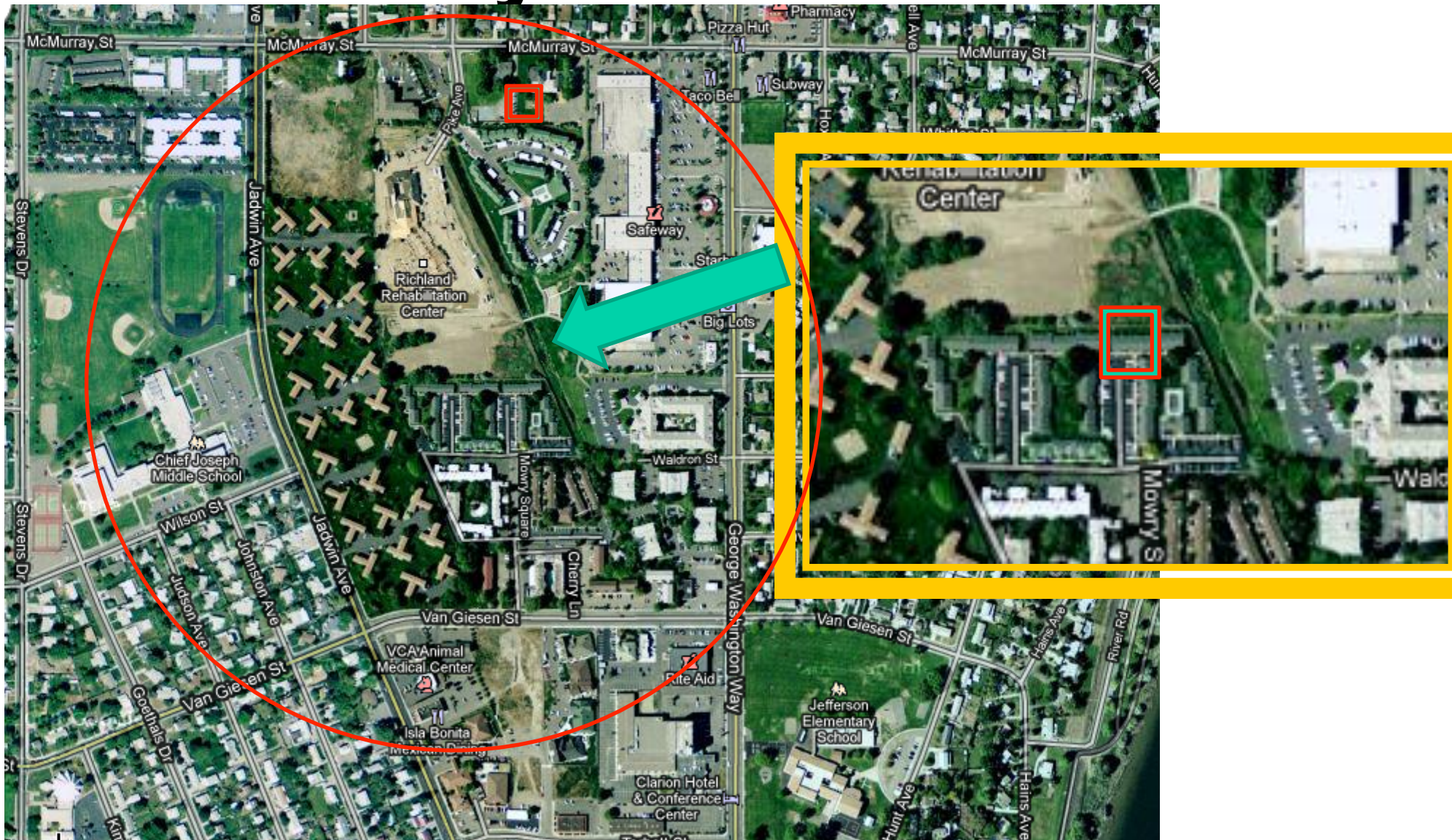
# CCAN – Hopeful Harvest Garden





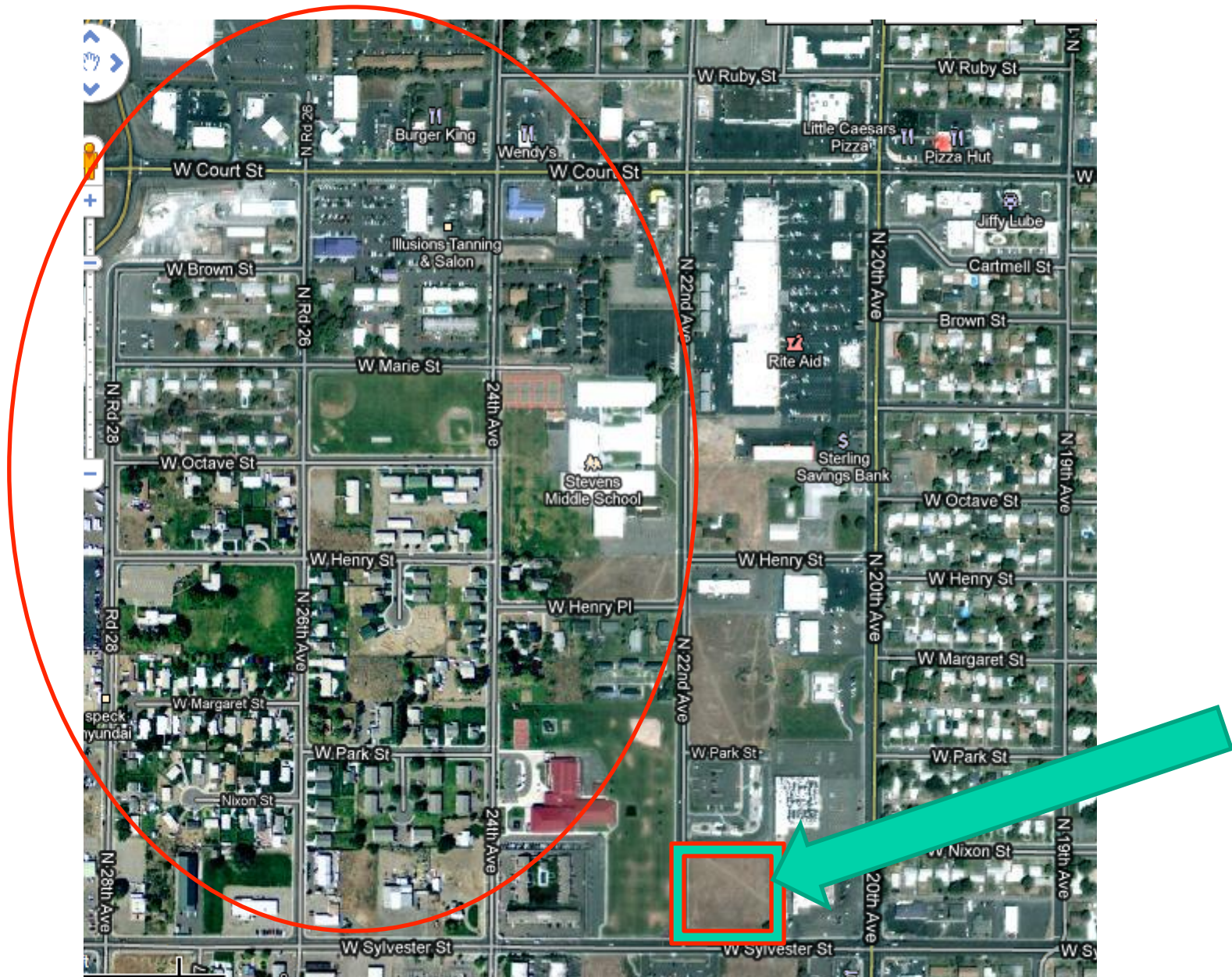
# McMurray Park Garden

## City of Richland





# Future Site - Hopefully





# **This is What We Told Them**

CCAN will help facilitate – keep folks together, focused, coordination of efforts.

CCAN can help with fund raising and sponsorship requests

CCAN can help with publicity and coordinate additional trainings

CCAN can show you where to get info on property ownership, and approach land owners, cities, etc.





Growing Community  
Across the U.S. & Canada

[ABOUT ACGA](#)

[LEARN](#)

[CONNECT](#)

[STORE](#)

[TAKE ACTION](#)

[SUPPORT US](#)

[SEARCH](#)

## LEARN

[BEST PRACTICES \(10 TIPS SERIES\)](#)

[FAQ](#)

## RESOURCES

[ACGA Video](#)

[Articles](#)

[Funding Opportunities](#)

[Publications](#)

[Research](#)

[Resource Links](#)

## STARTING A COMMUNITY GARDEN

[Rebel Tomato](#)

## TOOLS

## TRAINING

[Annual Conference](#)

[Video Addresses](#)

[Growing Communities](#)

[What Participants Had to Say](#)

[Hosting Growing Communities](#)

[Registration](#)

[Teleconferences](#)

## WHAT IS A COMMUNITY GARDEN?

[Find a Community Garden](#)

## YOUTH

[Garden Mosaics](#)

[Rebel Tomato](#)

# WHAT IS A COMMUNITY GARDEN?

Very Simply, it is:

**Any piece of land gardenized by a group of people.**

We at the ACGA have a broad definition of what a community garden entails. It can be urban, suburban, or rural. It can grow flowers, vegetables or community. It can be one community plot, or can be many individual plots. It can be at a school, hospital, or in a neighborhood. It can also be a series of plots dedicated to "urban agriculture" where the produce is grown for a market.



## Benefits of Community Gardens:

- Improves the quality of life for people in the garden
- Provides a catalyst for neighborhood and community development
- Stimulates Social Interaction
- Encourages Self-Reliance
- Beautifies Neighborhoods
- Produces Nutritious Food
- Reduces Family Food Budgets
- Conserves Resources
- Creates opportunity for recreation, exercise, therapy, and education
- Reduces Crime
- Preserves Green Space
- Creates income opportunities and economic development
- Reduces city heat from streets and parking lots

# **Sponsors & Partners**

**Advanced Construction Services  
Royal Organic Products  
United Pipe & Supply**

**FFA from Kamiakin HS**



**More info?**

**[ginger@ccando.org](mailto:ginger@ccando.org)**

**509-528-9377**



# A little history

- 1960s – rumor has it that there were over 30 gardens in Tacoma.
- Program passed to Metro Parks Tacoma, interest waned.
- Mid 2000s – interest rises again
- ACHIEVE pulls together diverse partnership including City, Conservation district, Health Dept, WSU Extension, Cascade Land Conservancy
- City of Tacoma kicks off the process by announcing 7 new sites!





# Benefits? Lots.



- Healthy food, physical activity, strong neighborhoods, connection to food supply, opportunities for learning, intergenerational connections.....and lots lots more.
- Each of these benefits represents potential partner organizations
- Partnerships are key – the more diverse the better!

# What are community gardens, anyways?

- A piece of land gardened by more than one household – ACGA

Also:

- Community managed open space
- What does this mean for us??





# How can we support communities in doing this?

Two big needs:

- Community piece (80%)
- Garden piece (20%)

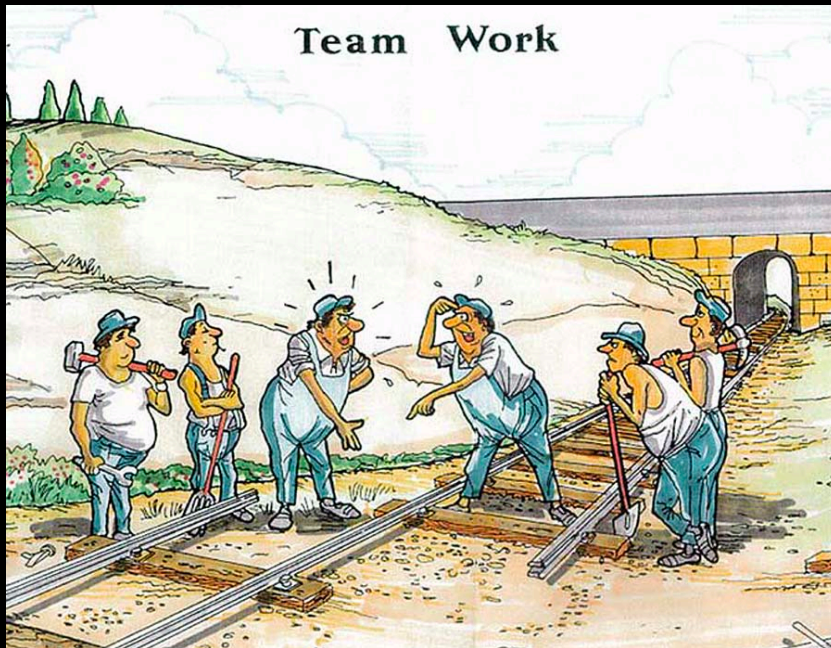


# Community Piece (80%)

- Tragedy of the commons – Garrett Harding – depressing!

Vs:

- Governing the commons – Elinor Ostrom – offers some guiding design principles.





# Design principles for sustainable management of the commons

- Group boundaries are clearly defined.
- Rules governing the use of collective goods are well matched to local needs and conditions.
- Most individuals affected by these rules can participate in modifying the rules.
- The rights of community members to devise their own rules is respected by external authorities.
- A system for monitoring member's behavior exists; the community members themselves undertake this monitoring.
- A graduated system of sanctions is used.
- Community members have access to low-cost conflict resolution mechanisms.

# What does this mean for community gardens? Let's take them one by one.

- Group boundaries are clearly defined.
- Rules governing the use of collective goods are well matched to local needs and conditions.
- Most individuals affected by these rules can participate in modifying the rules.
- The rights of community members to devise their own rules is respected by external authorities.

# What does this mean for community gardens? cont...

- A system for monitoring member's behavior exists; the community members themselves undertake this monitoring.
- A graduated system of sanctions is used.
- Community members have access to low-cost conflict resolution mechanisms.

# Starter questions – make your own rules

- Vision/purpose
- Leadership
- Design
- Communication
- Maintenance
- Participation
- Individual vs. communal
- Compost/waste
- Other?





# Garden Piece (20%) – Design

## What can be in a community garden?

- Individual or Communal garden plots
- Berry patches, orchards, educational areas, bbq pits, children's gardens, flowers, food bank donation plots, so so so much more...
- **The community should participate in the design of the garden to the maximum amount possible.**



# Garden Piece - infrastructure

- Land
- Water (meter and pipes)
- Soil
- Materials for construction (fence, raised beds)
- Plants
- Seeds
- Know-how (!)



# When communities are supported – amazing things can happen!

- Questions?