

# Breaking Down the Silos: Integrated Design Processes?

Nicole Faghin, LEED AP

*Sr. Associate, AECOM*

Sandy Howard, LEED AP

*Sustainability Strategist , City of Seattle Department of Planning and  
Development*

**AECOM**

# With Help From...

- Sandy Fischer, *AECOM*
- Susan Jones, LEED BD+C, FAIA, *atelierjones*
- Ray Gastil, *Gastilworks*
- Malli Anderson, *City of Seattle DPD*
- Jess Harris, *City of Seattle DPD*
- Samantha Updegrave, *LEED AP Planner*
- Lyle Bicknell, *City of Seattle DPD*
- Kathleen Smith, LEED AP BD+C, ID+C, LEED Faculty Senior Associate, *Davis Langdon/AECOM*

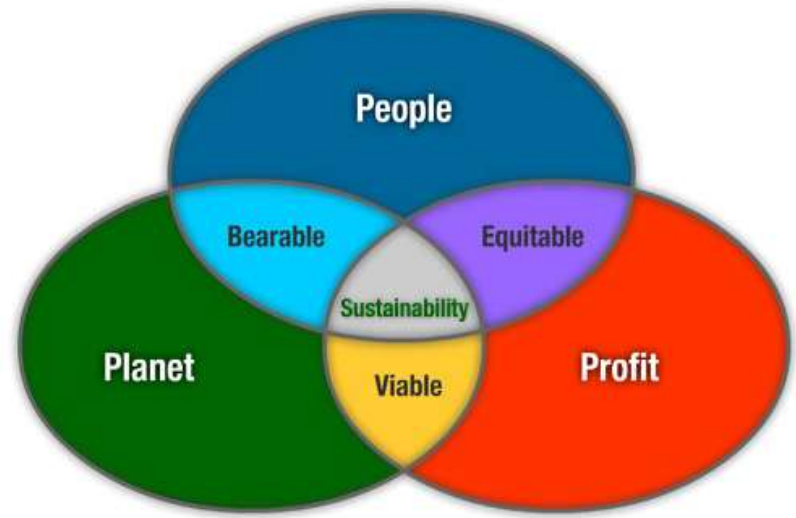
# Agenda

- Introduction
- A Tale of Two Processes
- Workshop
- Report out



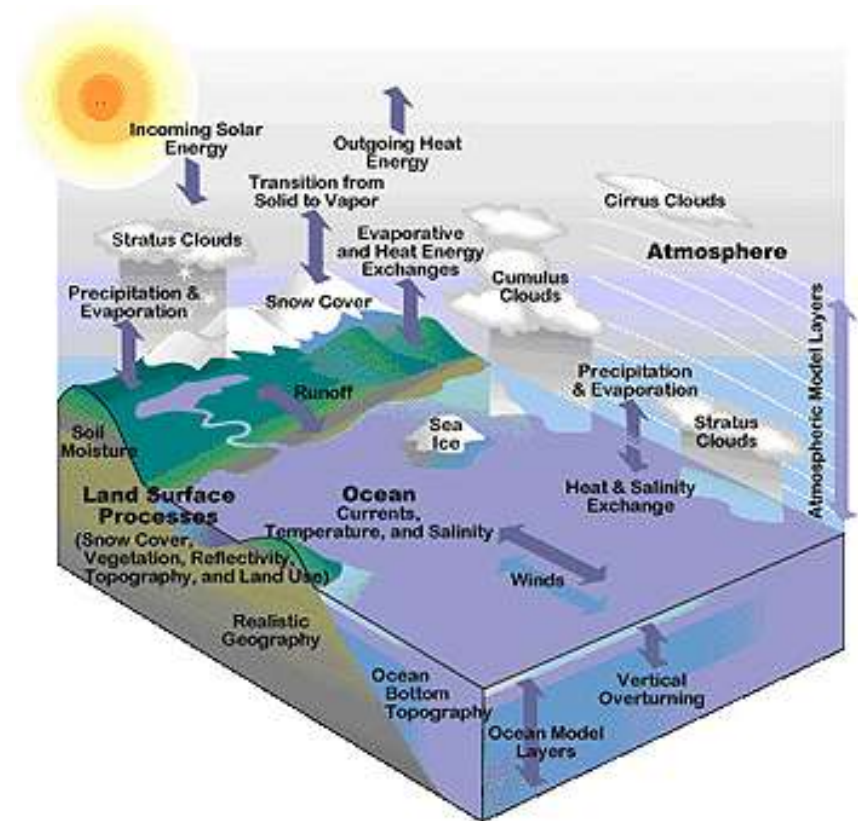
# Sustainable Development

Meet the needs of the present without compromising the ability of future generations to meet their needs



# Environmental Considerations

- Air
- Water
- Earth
- Flora & fauna
- Energy
- Resources
- Public health
- Climate change
- Endangered Species



# IMPACTS OF U.S. BUILDINGS ON RESOURCES

**40%** primary energy use\*

**72%** electricity consumption\*

**39%** CO<sub>2</sub> emissions\*

**13.6%** potable water consumption\*\*

\* Environmental Information Administration (2008) EIA Annual Energy Outlook

\*\* US Geological Survey (2002) 2002 data

Sources:

\*Environmental Information Administration (2008). EIA Annual Energy Outlook.

\*\* U.S. Geological Survey (2000). 2000 data.

# What Is Green Building?



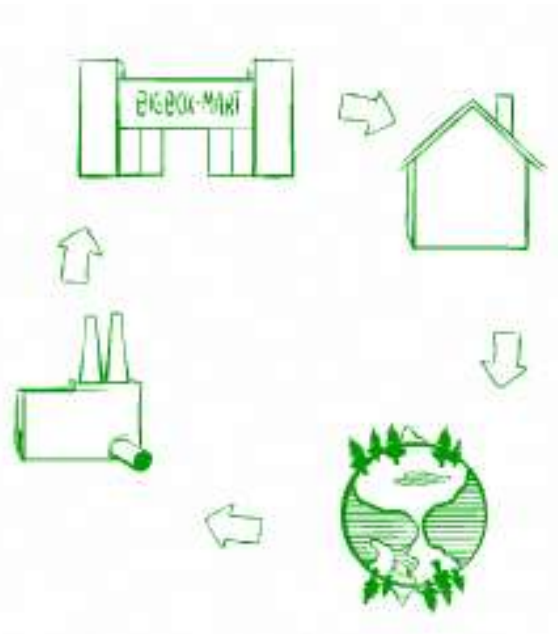
© U.S. Green Building Council, 2008

# Linear versus Integrated Systems

Linear

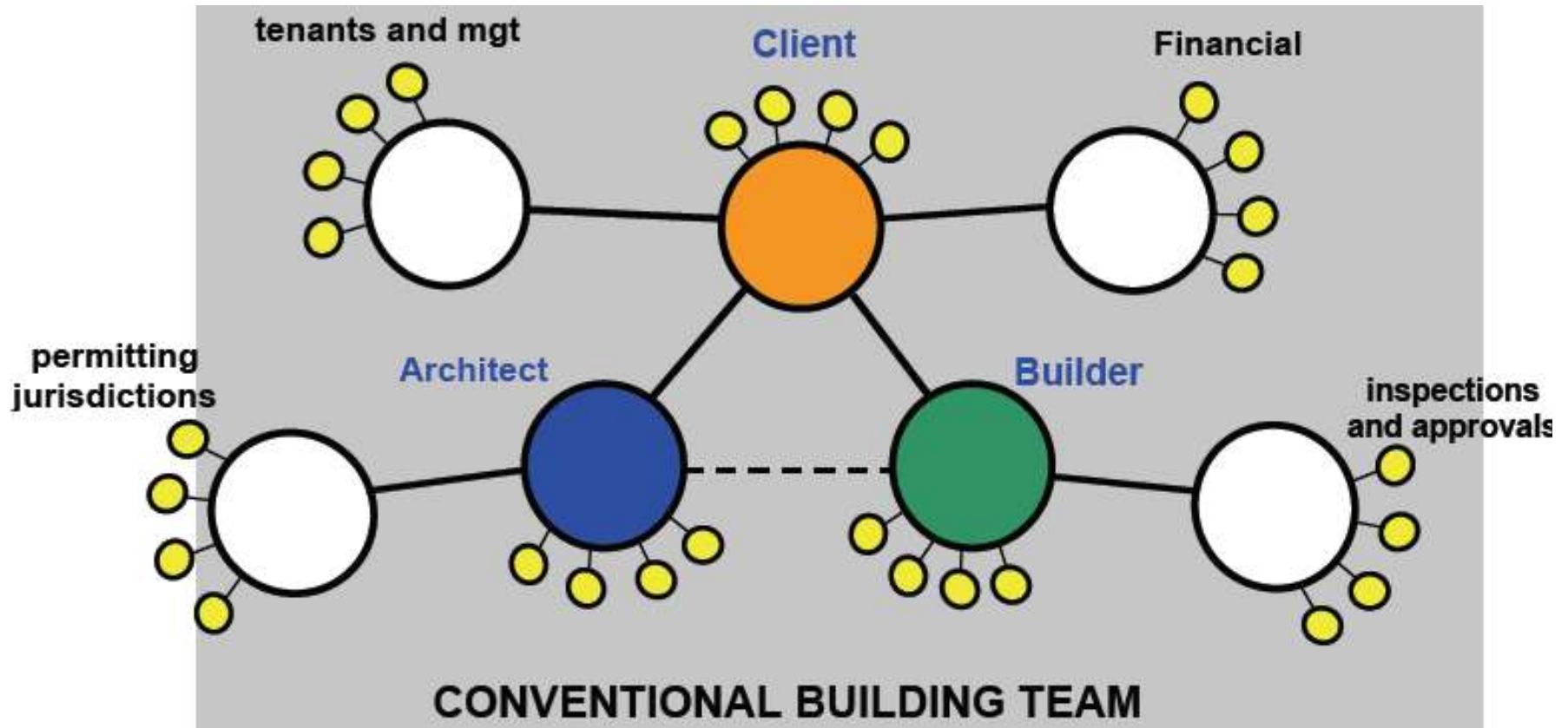


Integrated



“The story of Stuff”  
<http://www.storyofstuff.com/>

# Traditional Process



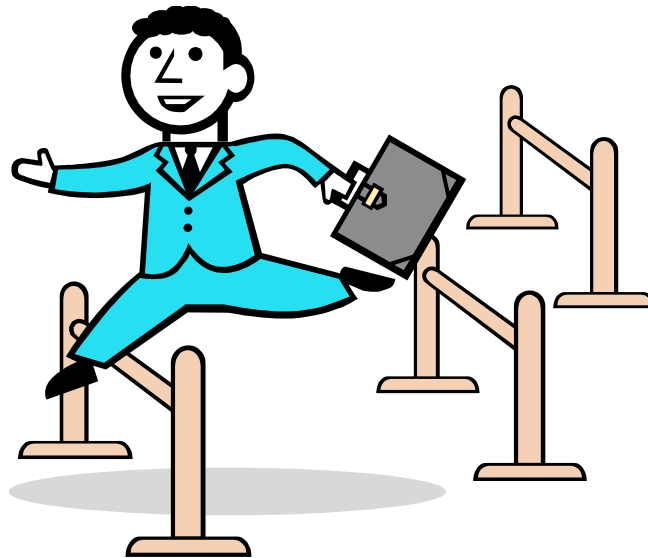
# The New GREEN Construction Process...

- Hold a design charrette early
- Integrated Team
- Non-governmental assistance and Training
- Take advantage of resources within agencies
  - **Green Team**



Now you need to get  
permits....

# Sequential Permit Approval



# Testing the Limits of a Linear Permit Process

- Land Use / Design Approvals
- Construction Permit Approvals
- Right of Way Approvals
- Water Department Approvals
- **ALL SEPARATE REVIEWS**

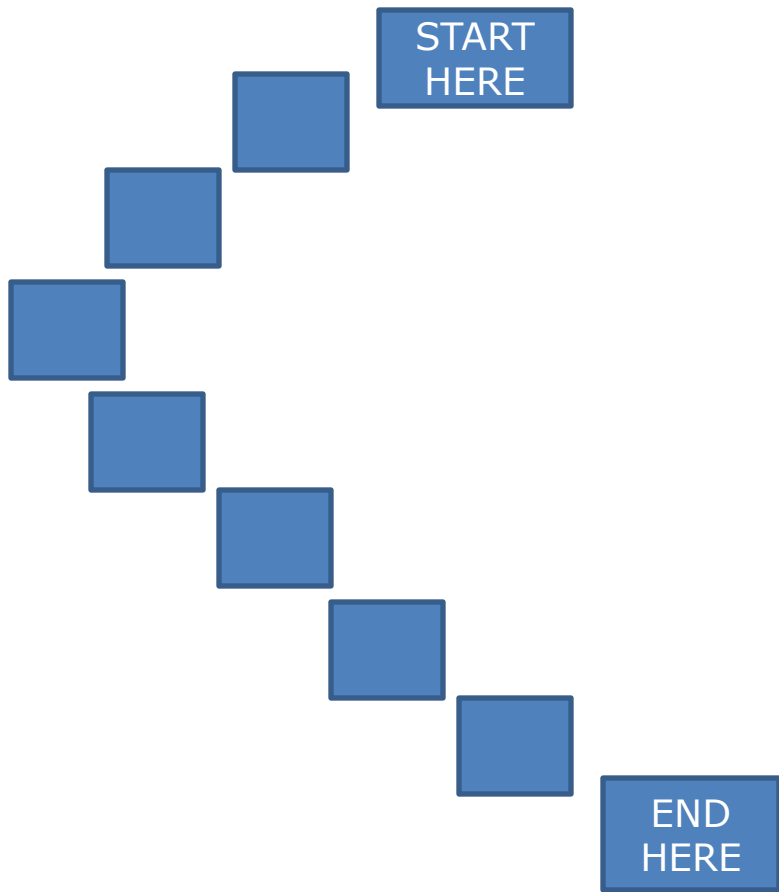


# Culture Change

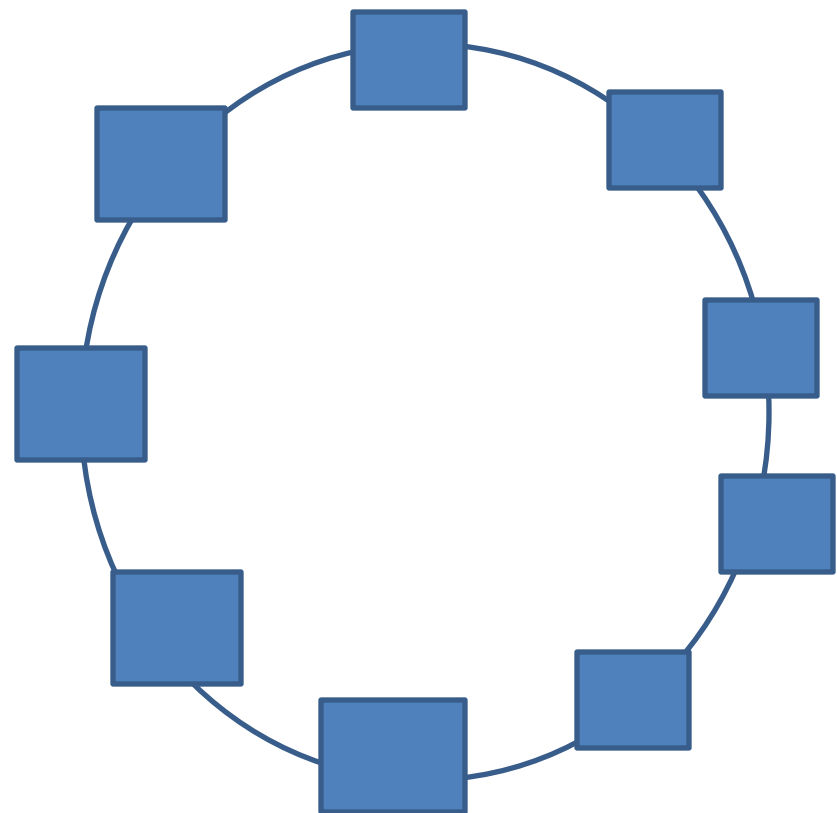


# Breaking Down the Silos

Traditional Permit Process



Integrated Process



# Workshop

- Assigned Roles
- Review Instructions
- Three Teams – 2 Linear, 1 Integrated Approaches
- Applicants Start through Review Process as described in your Instructions
- Report Out and Blue Sky Session

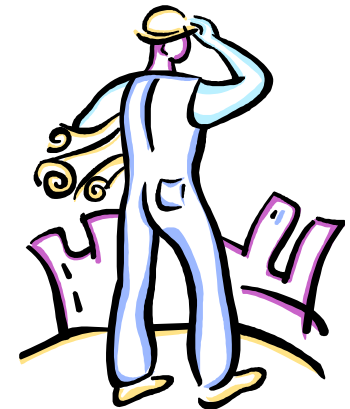


**atelierjones, llc**  
311 western ave. suite 440 seattle wa 98104  
206.834.9888 www.atelierjones.com

project plates used with permission by  
atelierjones architects and Trinity Real Estate

# Questions to Ponder

- How did you interact with your other team members?
- What were technical issues that stumped you and how did you resolve them?
- What worked and didn't work?
- What was your biggest challenge?



# Go Green Resources

- Cascadia Green Building Council:
  - <http://cascadiagbc.org/>
- USGBC:
  - <http://www.usgbc.org/Default.aspx>
- LEED On Line:
  - <https://leedonline.usgbc.org/Login.aspx>
- BuiltGreen:
  - <http://www.builtgreen.net/>
- LEED General Contractors:
  - <http://www.leedgeneralcontractor.com/>
- Seattle Green Team Resources:
  - <http://www.seattle.gov/dpd/greenbuilding/>
- Green I-Code Development:
  - <http://www.iccsafe.org/news/green/>





**atelierjones, llc**  
 311 western ave. suite 440 seattle wa 98104  
 206.624.9944 www.atelierjones.com  
 project plates used with permission by  
 atelierjones architects and Trinity Real Estate